

## SMAD2/3 RABBIT PAB

**Cat.#:** N226001

**Product Name:** Anti-Smad2/3 Rabbit pAb

**Synonyms:** SMAD2; MADH2; MADR2; Mothers against decapentaplegic homolog 2; MAD homolog 2; Mothers against DPP homolog 2; JV18-1; Mad-related protein 2; hMAD-2; SMAD family member 2; SMAD 2; Smad2; hSMAD2

**UNIPROT ID:** Q15796

**Background:** The protein encoded by this gene belongs to the SMAD, a family of proteins similar to the gene products of the Drosophila gene 'mothers against decapentaplegic' (Mad) and the C. elegans gene Sma. SMAD proteins are signal transducers and transcriptional modulators that mediate multiple signaling pathways.

**Immunogen:** Recombinant protein of human Smad2

**Applications:** WB, ICC/IF, FC, IP, ChIP

**Recommended Dilutions:** WB: 1/500-1/1000 IF: 1/50-1/200 IP: 1/20 FC: 1/50-1/100 ChIP: 1/20

**Host Species:** Rabbit

**Clonality:** Rabbit Polyclonal

**Clone ID:** -

**MW:** Calculated MW: 52 kDa; Observed MW: 52,60 kDa

**Isotype:** IgG

**Purification:** Affinity Purified

**Species Reactivity:** Human, Mouse, Rat

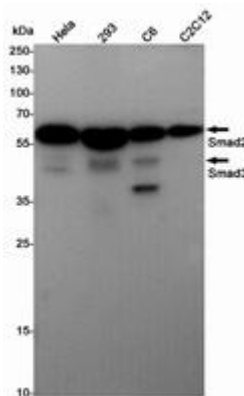
**Conjugation:** Unconjugated

**Modification:** Unmodified

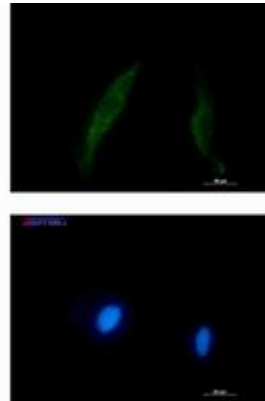
**Constituents:** PBS (without Mg<sup>2+</sup> and Ca<sup>2+</sup>), pH 7.3 containing 50% glycerol, 0.5% BSA and 0.02% sodium azide

**Research Areas:** Signal Transduction

**Storage & Shipping:** Store at -20°C. Avoid repeated freezing and thawing



Western blot analysis of Smad2/3 in Hela, 293, C6, C2C12 lysates using Smad2/3 antibody.



Immunocytochemistry analysis of Smad2/3 (green) in HT-1080 using Smad2/3 antibody, and DAPI (blue).