

## SMAD2 (6H5) MOUSE MAB

**Cat.#:** N261087

**Product Name:** Anti-Smad2 (6H5) Mouse Monoclonal Antibody

**Synonyms:** SMAD2; MADH2; MADR2; Mothers against decapentaplegic homolog 2; MAD homolog 2; Mothers against DPP homolog 2; JV18-1; Mad-related protein 2; hMAD-2; SMAD family member 2; SMAD 2; Smad2; hSMAD2

**UNIPROT ID:** Q15796

**Background:** The protein encoded by this gene belongs to the SMAD, a family of proteins similar to the gene products of the Drosophila gene 'mothers against decapentaplegic' (Mad) and the C. elegans gene Sma. SMAD proteins are signal transducers and transcriptional modulators that mediate multiple signaling pathways.

**Immunogen:** Purified recombinant human Smad2 protein fragments expressed in E.coli.

**Applications:** WB, ICC/IF

**Recommended Dilutions:** WB: 1/500-1/1000 IF: 1/50-1/200

**Host Species:** Mouse

**Clonality:** Mouse Monoclonal

**Clone ID:** 6H5-E3-C11

**MW:** Calculated MW: 52 kDa; Observed MW: 60 kDa

**Isotype:** IgG1

**Purification:** Affinity Purified

**Species Reactivity:** Human, Mouse

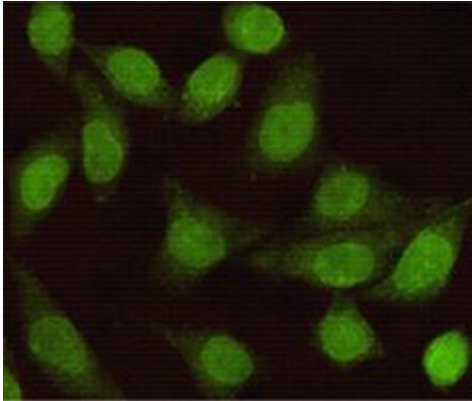
**Conjugation:** Unconjugated

**Modification:** Unmodified

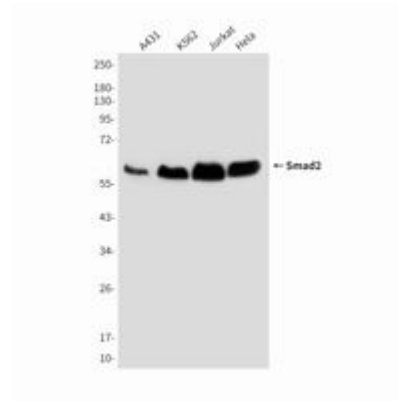
**Constituents:** PBS (without Mg<sup>2+</sup> and Ca<sup>2+</sup>), pH 7.3 containing 50% glycerol, 0.5% BSA and 0.02% sodium azide

**Research Areas:** Signal Transduction

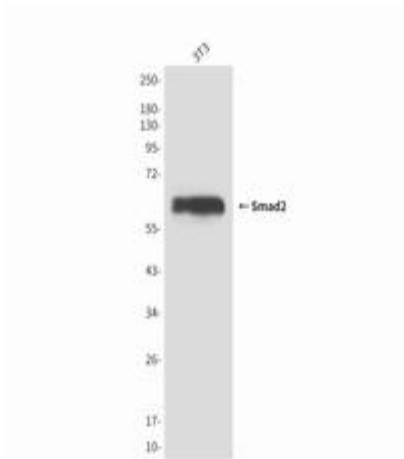
**Storage & Shipping:** Store at -20°C. Avoid repeated freezing and thawing



Immunocytochemistry analysis of Smad2 (6H5) in HeLa using Smad2 antibody.



Western blot analysis of Smad2 in HeLa, A431, Jurkat and K562 lysates using Smad2 antibody.



Western blot analysis of Smad2 (6H5) in 3T3 lysates using Smad2 antibody.