

SMAD5 RABBIT PAB

Cat.#: S216281

Product Name: Anti-SMAD5 Rabbit Polyclonal Antibody

Synonyms: DWFC; JV5-1; MADH5

UNIPROT ID: Q99717 (Gene Accession - BC009682)

Background: The protein encoded by this gene is involved in the TGF-beta signaling pathway that results in an inhibition of the proliferation of hematopoietic progenitor cells. The encoded protein is activated by BMP type 1 receptor kinase. Three transcript variants encoding the same protein have been found for this gene.

Immunogen: Fusion protein of human SMAD5

Applications: ELISA, IHC

Recommended Dilutions: IHC: 25-100; ELISA: 2000-5000

Host Species: Rabbit

Clonality: Rabbit Polyclonal

Isotype: Immunogen-specific rabbit IgG

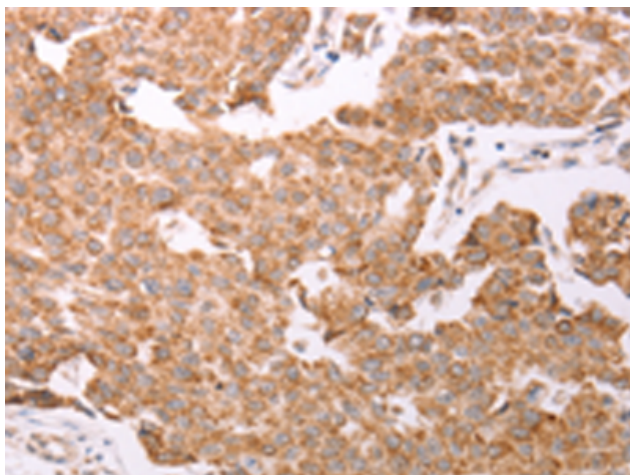
Purification: Antigen affinity purification

Species Reactivity: Human, Mouse, Rat

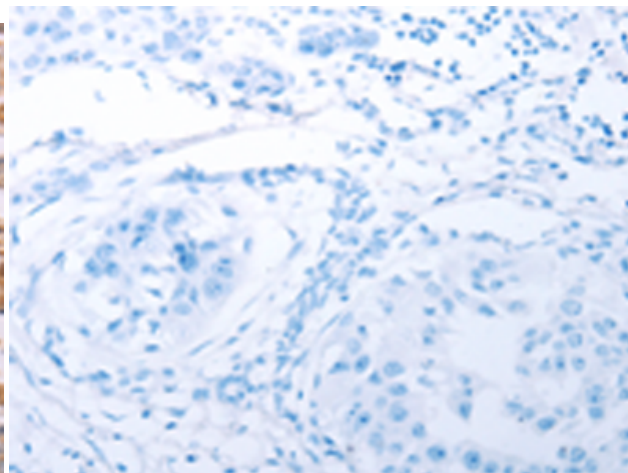
Constituents: PBS (without Mg²⁺ and Ca²⁺), pH 7.4, 150 mM NaCl, 0.05% Sodium Azide and 40% glycerol

Research Areas: Signal Transduction, Epigenetics and Nuclear Signaling, Developmental Biology

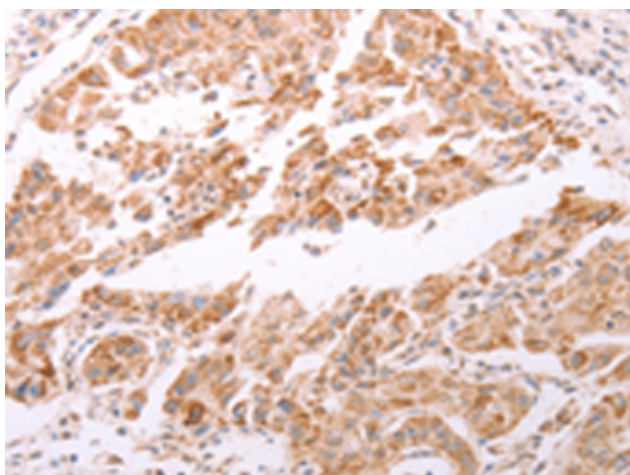
Storage & Shipping: Store at -20°C. Avoid repeated freezing and thawing



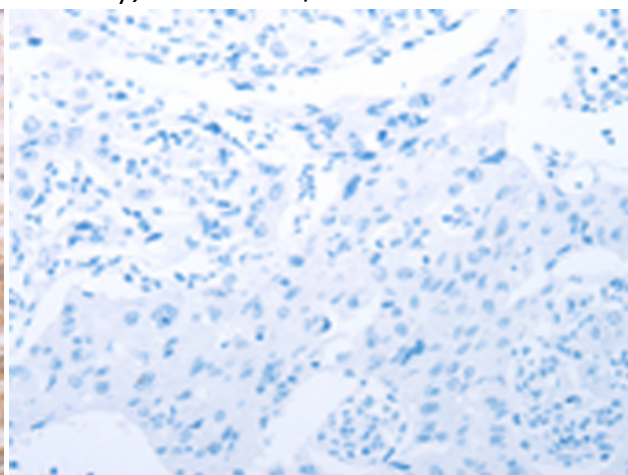
Immunohistochemistry analysis of paraffin embedded Human breast cancer tissue using 216281(SMAD5 Antibody) at a dilution of 1/20(Cytoplasm).



In comparison with the IHC on the left, the same paraffin-embedded Human breast cancer tissue is first treated with the fusion protein and then with 216281(Anti-SMAD5 Antibody) at dilution 1/20.



The image on the left is immunohistochemistry of paraffin-embedded Human lung cancer tissue using 216281(Anti-SMAD5 Antibody) at a dilution of 1/20.



In comparison with the IHC on the left, the same paraffin-embedded Human lung cancer tissue is first treated with fusion protein and then with D220123(Anti-SMAD5 Antibody) at dilution 1/20.