

SMAGP RABBIT PAB

Cat.#: S220948

Product Name: Anti-SMAGP Rabbit Polyclonal Antibody

Synonyms: hSMAGP

UNIPROT ID: Q0VAQ4 (Gene Accession - NP_001026798)

Background: SMAGP (small transmembrane and glycosylated protein) is a 97 amino acid single-pass type III membrane protein that localizes to the membrane of cytoplasmic vesicles. Existing as a murine-specific protein, SMAGP is thought to play a role in epithelial cell-cell contacts and, via its ability to control cell adhesion, may be involved in tumor formation, as well as overall tumor invasiveness and metastasis. SMAGP is subject to post-translational O-glycosylation which is thought to be modified with sialic acid residues. The gene encoding SMAGP maps to murine chromosome 15.

Immunogen: Synthetic peptide of human SMAGP

Applications: ELISA, IHC

Recommended Dilutions: IHC: 25-100; ELISA: 1000-2000

Host Species: Rabbit

Clonality: Rabbit Polyclonal

Isotype: Immunogen-specific rabbit IgG

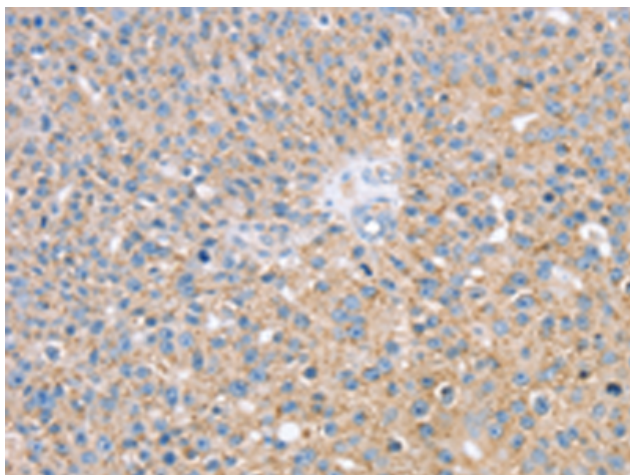
Purification: Antigen affinity purification

Species Reactivity: Human, Mouse, Rat

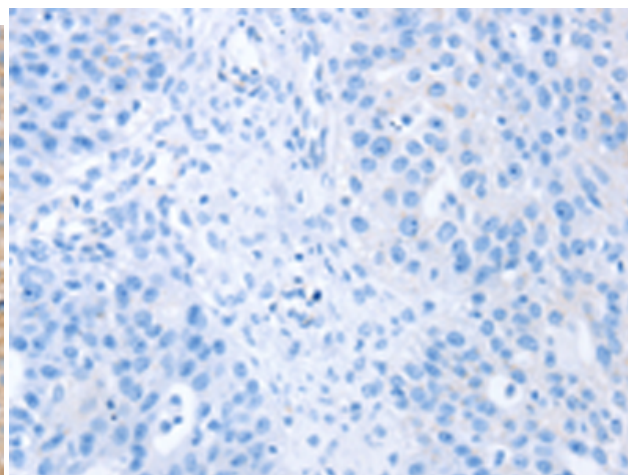
Constituents: PBS (without Mg²⁺ and Ca²⁺), pH 7.4, 150 mM NaCl, 0.05% Sodium Azide and 40% glycerol

Research Areas: Signal Transduction, Cancer

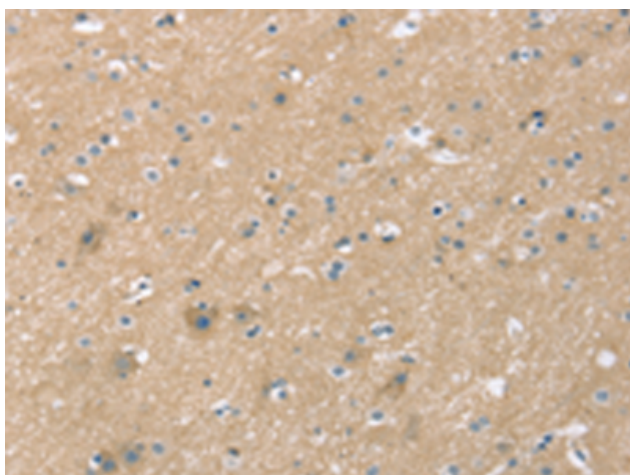
Storage & Shipping: Store at -20°C. Avoid repeated freezing and thawing



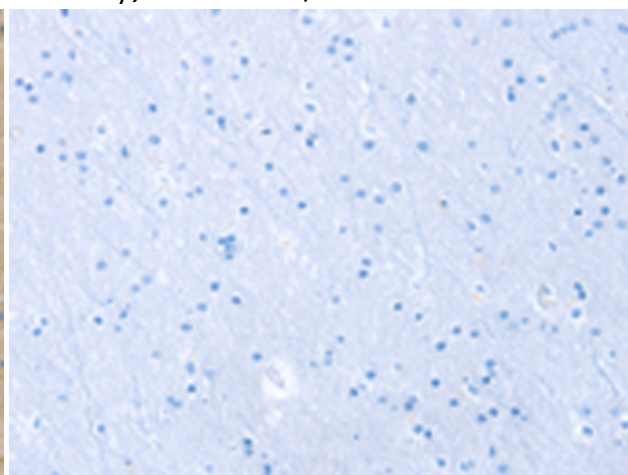
Immunohistochemistry analysis of paraffin embedded Human breast cancer tissue using 220948(SMAGP Antibody) at a dilution of 1/35(Cytoplasm and Cell membrane).



In comparison with the IHC on the left, the same paraffin-embedded Human breast cancer tissue is first treated with the synthetic peptide and then with 220948(Anti-SMAGP Antibody) at dilution 1/35.



The image on the left is immunohistochemistry of paraffin-embedded Human brain tissue using 220948(Anti-SMAGP Antibody) at a dilution of 1/35.



In comparison with the IHC on the left, the same paraffin-embedded Human brain tissue is first treated with synthetic peptide and then with D262270(Anti-SMAGP Antibody) at dilution 1/35.