

## SMARCB1 RABBIT MAB

**Cat.#:** N262919

**Product Name:** Anti-SMARCB1 Rabbit Monoclonal Antibody

**Synonyms:** SMARCB1; BAF47; hSNF5; INI1; RDT; RTPS1; Sfh1p; SMARCB1; SNF5 homolog; SNF5L1; Snr1; SWI/SNF comp

**UNIPROT ID:** Q12824

**Background:** The SWI-SNF complex is involved in the activation of transcription via the remodeling of nucleosome structure in an ATP-dependent manner. Brm (also designated SNF2 $\alpha$ ) and Brg-1 (also designated SNF2 $\beta$ ) are the ATPase subunits of the mammalian SWI-SNF complex.

**Immunogen:** Recombinant protein of human SNF5

**Applications:** WB,IHC-F,IHC-P,ICC/IF,IP

**Recommended Dilutions:** WB: 1/500-1/1000 IHC: 1/50-1/100 IF: 1/50-1/200 IP: 1/20

**Host Species:** Rabbit

**Clonality:** Rabbit Monoclonal

**Clone ID:** R07-5C7

**MW:** Calculated MW: 44 kDa; Observed MW: 44 kDa

**Isotype:** IgG

**Purification:** Affinity Purified

**Species Reactivity:** Human,Mouse

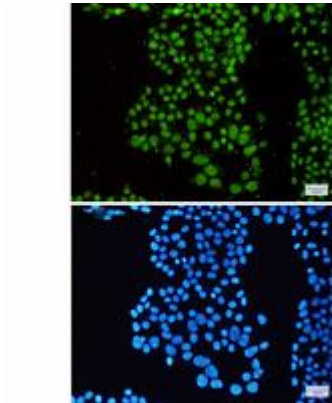
**Conjugation:** Unconjugated

**Modification:** Unmodified

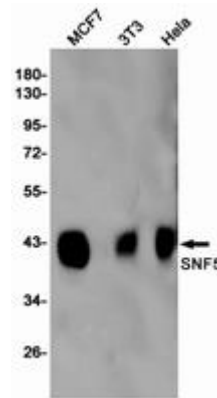
**Constituents:** PBS (without Mg<sup>2+</sup> and Ca<sup>2+</sup>), pH 7.3 containing 50% glycerol, 0.5% BSA and 0.02% sodium azide

**Research Areas:** Epigenetics and Nuclear Signaling

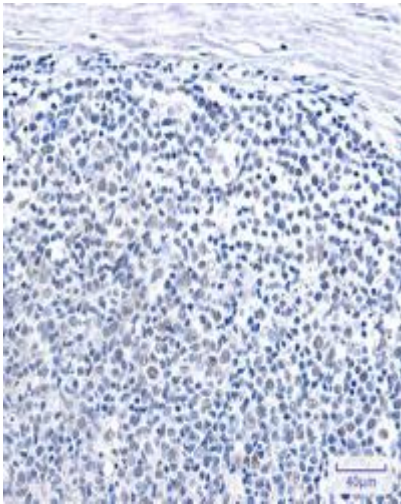
**Storage & Shipping:** Store at -20°C. Avoid repeated freezing and thawing



Immunocytochemistry analysis of SNF5 (green) in HeLa using SNF5 antibody, and DAPI (blue)



Western blot analysis of SNF5 in MCF-7, 3T3, HeLa lysates using SMARCB1 antibody.



Immunohistochemistry analysis of paraffin-embedded Human tonsil using SNF5 antibody. High-pressure and temperature Sodium Citrate pH 6.0 was used for antigen retrieval.