

SMARCB1 RABBIT PAB

Cat.#: S217840

Product Name: Anti-SMARCB1 Rabbit Polyclonal Antibody

Synonyms: RDT; INI1; SNF5; Snr1; BAF47; MRD15; RTPS1; Sfh1p; hSNFS; SNF5L1; SWNTS1; PPP1R144

UNIPROT ID: Q12824 (Gene Accession - BC117114)

Background: The protein encoded by this gene is part of a complex that relieves repressive chromatin structures, allowing the transcriptional machinery to access its targets more effectively. The encoded nuclear protein may also bind to and enhance the DNA joining activity of HIV-1 integrase. This gene has been found to be a tumor suppressor, and mutations in it have been associated with malignant rhabdoid tumors. Two transcript variants encoding different isoforms have been found for this gene.

Immunogen: Fusion protein of human SMARCB1

Applications: ELISA, WB, IHC

Recommended Dilutions: IHC: 30-150;WB: 200-1000;ELISA: 1000-2000

Host Species: Rabbit

Clonality: Rabbit Polyclonal

Isotype: Immunogen-specific rabbit IgG

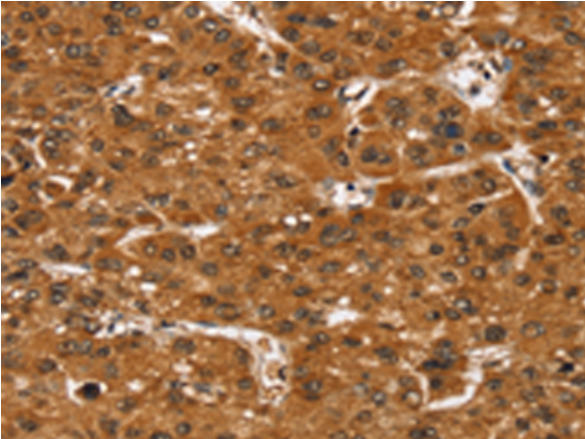
Purification: Antigen affinity purification

Species Reactivity: Human, Mouse

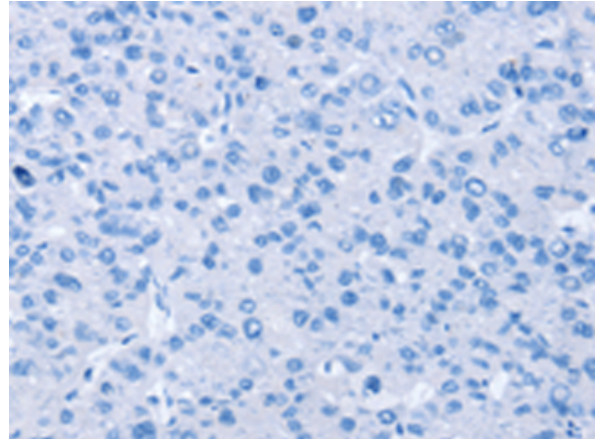
Constituents: PBS (without Mg²⁺ and Ca²⁺), pH 7.4, 150 mM NaCl, 0.05% Sodium Azide and 40% glycerol

Research Areas: Epigenetics and Nuclear Signaling, Cancer

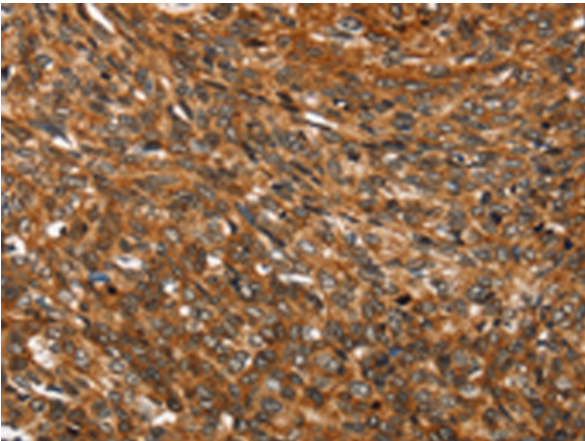
Storage & Shipping: Store at -20°C. Avoid repeated freezing and thawing



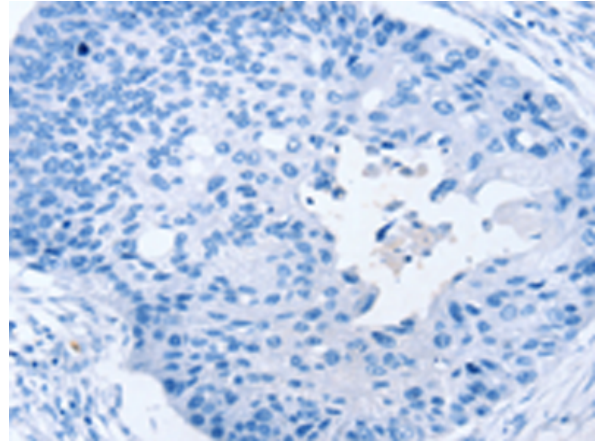
Immunohistochemistry analysis of paraffin embedded Human liver cancer tissue using 217840(SMARCB1 Antibody) at a dilution of 1/35(Nucleus).



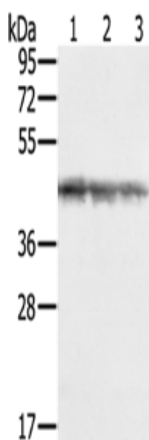
In comparison with the IHC on the left, the same paraffin-embedded Human liver cancer tissue is first treated with the fusion protein and then with 217840(Anti-SMARCB1 Antibody) at dilution 1/35.



The image on the left is immunohistochemistry of paraffin-embedded Human esophagus cancer tissue using 217840(Anti-SMARCB1 Antibody) at a dilution of 1/35.



In comparison with the IHC on the left, the same paraffin-embedded Human esophagus cancer tissue is first treated with fusion protein and then with D223195(Anti-SMARCB1 Antibody) at dilution 1/35.



Gel: 8%SDS-PAGE, Lysate: 40 µg;
 Lane 1-3: Jurkat cells, K562 cells, hepg2 cells;
 Primary antibody: 217840(SMARCB1 Antibody) at dilution 1/450;
 Secondary antibody: Goat anti rabbit IgG at 1/8000 dilution;
 Exposure time: 10 seconds



Product Description

Pioneering GTPase and Oncogene Product Development since 2010
