

SMARCD1 RABBIT MAB

Cat.#: N263553

Product Name: Anti-SMARCD1 Rabbit Monoclonal Antibody

Synonyms: CSS11; Rsc6p; BAF60A; CRACD1

UNIPROT ID: Q96GM5

Background: Involved in transcriptional activation and repression of select genes by chromatin remodeling (alteration of DNA-nucleosome topology).

Immunogen: A synthetic peptide of human SMARCD1

Applications: WB,IP

Recommended Dilutions: WB: 1/500-1/1000 IP: 1/20

Host Species: Rabbit

Clonality: Rabbit Monoclonal

Clone ID: R01-0E4

MW: Calculated MW: 58 kDa; Observed MW: 58 kDa

Isotype: IgG

Purification: Affinity Purified

Species Reactivity: Human

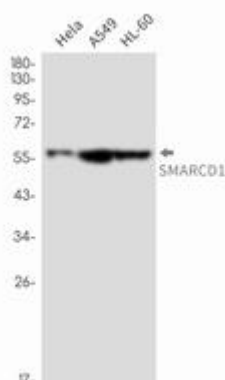
Conjugation: Unconjugated

Modification: Unmodified

Constituents: PBS (without Mg²⁺ and Ca²⁺), pH 7.3 containing 50% glycerol, 0.5% BSA and 0.02% sodium azide

Research Areas: Epigenetics and Nuclear Signaling

Storage & Shipping: Store at -20°C. Avoid repeated freezing and thawing



Western blot analysis of SMARCD1 in HeLa, A549, HL-60 lysates using SMARCD1 antibody.



Product Description

Pioneering GTPase and Oncogene Product Development since 2010
