

SMC6 RABBIT PAB

Cat.#: S220953

Product Name: Anti-SMC6 Rabbit Polyclonal Antibody

Synonyms: SMC-6; hSMC6; SMC6L1

UNIPROT ID: Q96SB8 (Gene Accession - NP_078900)

Background: Structural maintenance of chromosomes protein 6 is a protein that in humans is encoded by the SMC6 gene. Core component of the SMC5-SMC6 complex, a complex involved in DNA double-strand breaks by homologous recombination. The complex may promote sister chromatid homologous recombination by recruiting the SMC1-SMC3 cohesin complex to double-strand breaks.

Immunogen: Synthetic peptide of human SMC6

Applications: ELISA, WB, IHC

Recommended Dilutions: IHC: 20-100;WB: 500-2000;ELISA: 2000-5000

Host Species: Rabbit

Clonality: Rabbit Polyclonal

Isotype: Immunogen-specific rabbit IgG

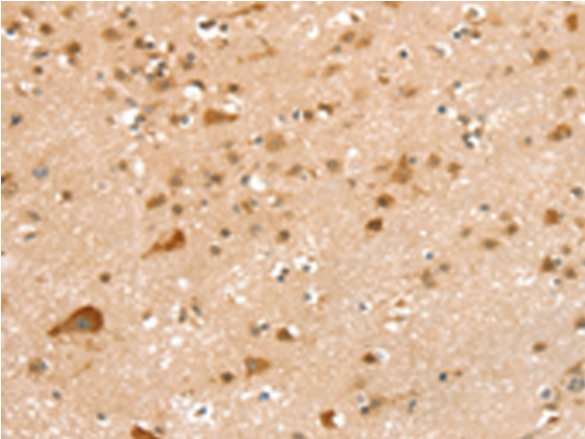
Purification: Antigen affinity purification

Species Reactivity: Human

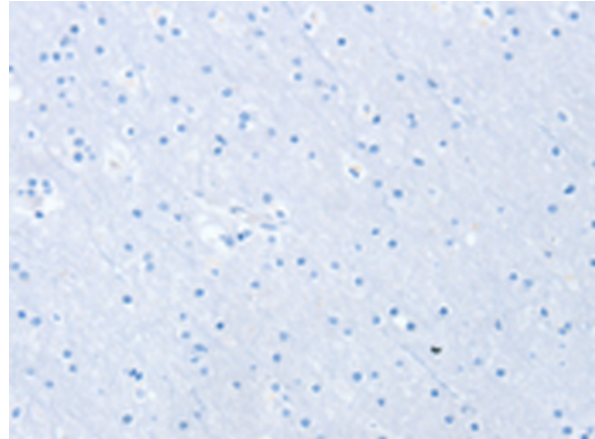
Constituents: PBS (without Mg²⁺ and Ca²⁺), pH 7.4, 150 mM NaCl, 0.05% Sodium Azide and 40% glycerol

Research Areas: Epigenetics and Nuclear Signaling, Cancer

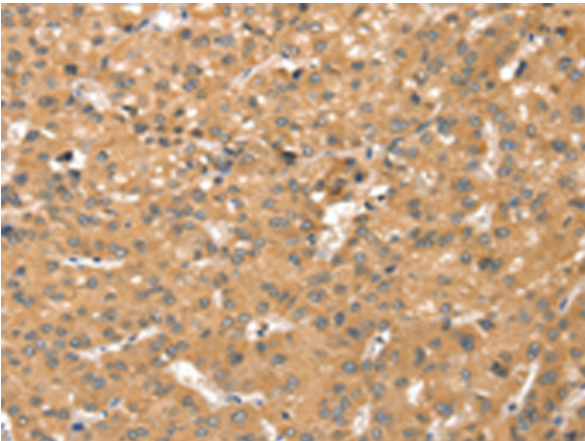
Storage & Shipping: Store at -20°C. Avoid repeated freezing and thawing



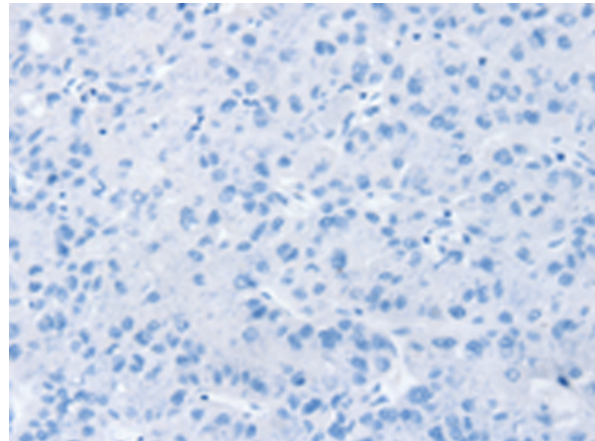
Immunohistochemistry analysis of paraffin embedded Human brain tissue using 220953(SMC6 Antibody) at a dilution of 1/20(Cytoplasm or Nucleus).



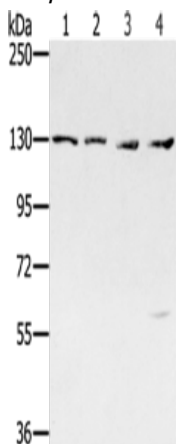
In comparison with the IHC on the left, the same paraffin-embedded Human brain tissue is first treated with the synthetic peptide and then with 220953(Anti-SMC6 Antibody) at dilution 1/20.



The image on the left is immunohistochemistry of paraffin-embedded Human liver cancer tissue using 220953(Anti-SMC6 Antibody) at a dilution of 1/20.



In comparison with the IHC on the left, the same paraffin-embedded Human liver cancer tissue is first treated with synthetic peptide and then with D262276(Anti-SMC6 Antibody) at dilution 1/20.



Gel: 6%SDS-PAGE, Lysate: 40 µg;
 Lane 1-4: Jurkat cells, 231 cells, hela cells, 293T cells;
 Primary antibody: 220953(SMC6 Antibody) at dilution 1/250;
 Secondary antibody: Goat anti rabbit IgG at 1/8000 dilution;
 Exposure time: 2 minutes



Product Description

Pioneering GTPase and Oncogene Product Development since 2010
