

## SMN RABBIT MAB

**Cat.#:** N262270

**Product Name:** Anti-SMN Rabbit Monoclonal Antibody

**Synonyms:** SMN1; SMN; SMNT; SMN2; SMNC; Survival motor neuron protein; Component of gems 1; Gemin-1

**UNIPROT ID:** Q16637

**Background:** The SMN complex plays an essential role in spliceosomal snRNP assembly in the cytoplasm and is required for pre-mRNA splicing in the nucleus. It may also play a role in the metabolism of snoRNPs.

**Immunogen:** A synthetic peptide of human Gemin 1

**Applications:** WB, ICC/IF

**Recommended Dilutions:** WB: 1/500-1/1000 IF: 1/50-1/200

**Host Species:** Rabbit

**Clonality:** Rabbit Monoclonal

**Clone ID:** R05-3B5

**MW:** Calculated MW: 32 kDa; Observed MW: 35 kDa

**Isotype:** IgG

**Purification:** Affinity Purified

**Species Reactivity:** Human

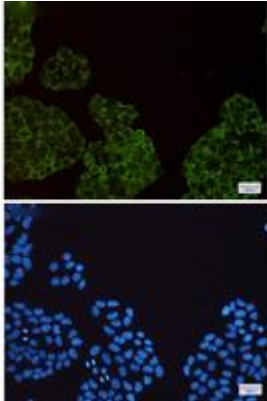
**Conjugation:** Unconjugated

**Modification:** Unmodified

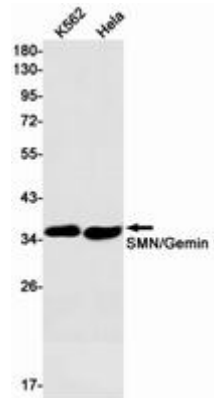
**Constituents:** PBS (without Mg<sup>2+</sup> and Ca<sup>2+</sup>), pH 7.3 containing 50% glycerol, 0.5% BSA and 0.02% sodium azide

**Research Areas:** Neuroscience

**Storage & Shipping:** Store at -20°C. Avoid repeated freezing and thawing



Immunocytochemistry analysis of Gemin 1 (green) in HeLa using Gemin 1 antibody, and DAPI (blue)



Western blot analysis of SMN/Gemin 1 in K562, HeLa lysates using SMN antibody.