

SMPD2 RABBIT PAB

Cat.#: S219113

Product Name: Anti-SMPD2 Rabbit Polyclonal Antibody

Synonyms: ISCI; NSMASE; NSMASE1

UNIPROT ID: O60906 (Gene Accession - BC000038)

Background: This gene encodes a protein which was initially identified as a sphingomyelinase based on sequence similarity between bacterial sphingomyelinases and a yeast protein. Subsequent studies showed that its biological function is less likely to be as a sphingomyelinase and instead as a lysophospholipase.

Immunogen: Fusion protein of human SMPD2

Applications: ELISA, WB, IHC

Recommended Dilutions: IHC: 50-300;WB: 1000-5000;ELISA: 5000-10000

Host Species: Rabbit

Clonality: Rabbit Polyclonal

Isotype: Immunogen-specific rabbit IgG

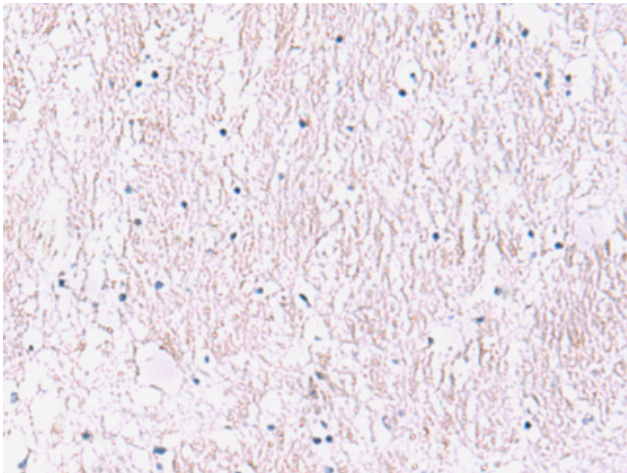
Purification: Antigen affinity purification

Species Reactivity: Human, Mouse, Rat

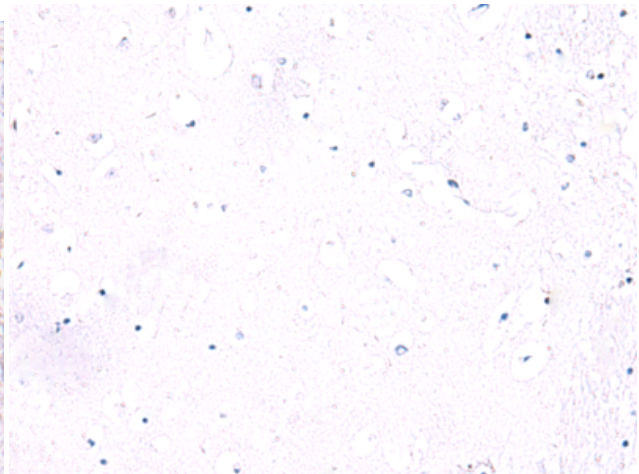
Constituents: PBS (without Mg²⁺ and Ca²⁺), pH 7.4, 150 mM NaCl, 0.05% Sodium Azide and 40% glycerol

Research Areas: Neuroscience

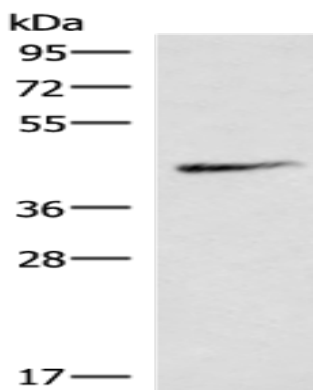
Storage & Shipping: Store at -20°C. Avoid repeated freezing and thawing



Immunohistochemistry analysis of paraffin embedded Human brain tissue using 219113(SMPD2 Antibody) at a dilution of 1/90(Cytoplasm).



In comparison with the IHC on the left, the same paraffin-embedded Human brain tissue is first treated with the fusion protein and then with 219113(Anti-SMPD2 Antibody) at dilution 1/90.



Gel: 8%SDS-PAGE, Lysate: 40 μ g;
Lane: Mouse lung tissue lysate;
Primary antibody: 219113(SMPD2 Antibody) at dilution 1/1000;
Secondary antibody: HRP-conjugated Goat anti rabbit IgG at 1/5000 dilution;
Exposure time: 10 minutes