

## SMS RABBIT PAB

**Cat.#:** S218663

**Product Name:** Anti-SMS Rabbit Polyclonal Antibody

**Synonyms:** SRS; SpS; MRSR; SPMSY; MRXSSR

**UNIPROT ID:** P52788 (Gene Accession - BC009898 )

**Background:** This gene encodes a protein belonging to the spermidine/spermin synthase family and catalyzes the production of spermine from spermidine. Pseudogenes of this gene are located on chromosomes 1, 5, 6 and X. Mutations in this gene cause an X-linked intellectual disability called Snyder-Robinson Syndrome (SRS). Multiple transcript variants encoding different isoforms have been found for this gene.

**Immunogen:** Fusion protein of human SMS

**Applications:** ELISA, IHC

**Recommended Dilutions:** IHC: 50-200; ELISA: 5000-10000

**Host Species:** Rabbit

**Clonality:** Rabbit Polyclonal

**Isotype:** Immunogen-specific rabbit IgG

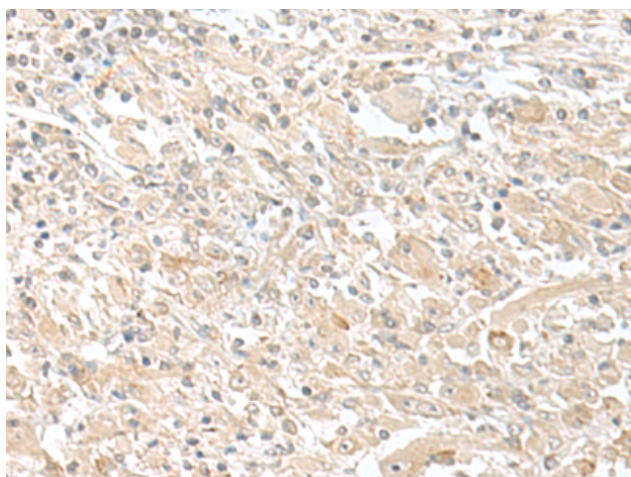
**Purification:** Antigen affinity purification

**Species Reactivity:** Human, Mouse

**Constituents:** PBS (without Mg<sup>2+</sup> and Ca<sup>2+</sup>), pH 7.4, 150 mM NaCl, 0.05% Sodium Azide and 40% glycerol

**Research Areas:** Metabolism, Developmental Biology

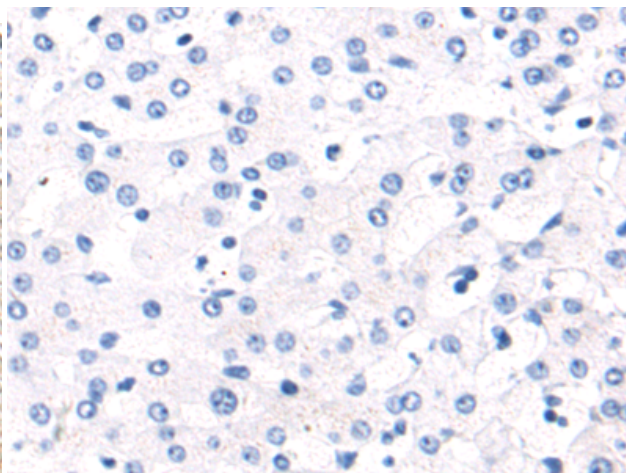
**Storage & Shipping:** Store at -20°C. Avoid repeated freezing and thawing



Immunohistochemistry analysis of paraffin embedded Human liver cancer tissue using 218663(SMS Antibody) at a dilution of 1/80(Cytoplasm).



The image on the left is immunohistochemistry of paraffin-embedded Human colorectal cancer tissue using 218663(Anti-SMS Antibody) at a dilution of 1/80.



In comparison with the IHC on the left, the same paraffin-embedded Human liver cancer tissue is first treated with the fusion protein and then with 218663(Anti-SMS Antibody) at dilution 1/80.



In comparison with the IHC on the left, the same paraffin-embedded Human colorectal cancer tissue is first treated with fusion protein and then with D224889(Anti-SMS Antibody) at dilution 1/80.



# Product Description

Pioneering GTPase and Oncogene Product Development since 2010

---