

SMURF1 RABBIT PAB

Cat.#: S213828

Product Name: Anti-SMURF1 Rabbit Polyclonal Antibody

Synonyms:

UNIPROT ID: Q9HCE7 (Gene Accession - NP_065162)

Background: This gene encodes a ubiquitin ligase that is specific for receptor-regulated SMAD proteins in the bone morphogenetic protein (BMP) pathway. This protein plays a key roll in the regulation of cell motility, cell signalling, and cell polarity. Alternative splicing results in multiple transcript variants encoding different isoforms.

Immunogen: Synthetic peptide of human SMURF1

Applications: ELISA, IHC

Recommended Dilutions: IHC: 25-100; ELISA: 1000-2000

Host Species: Rabbit

Clonality: Rabbit Polyclonal

Isotype: Immunogen-specific rabbit IgG

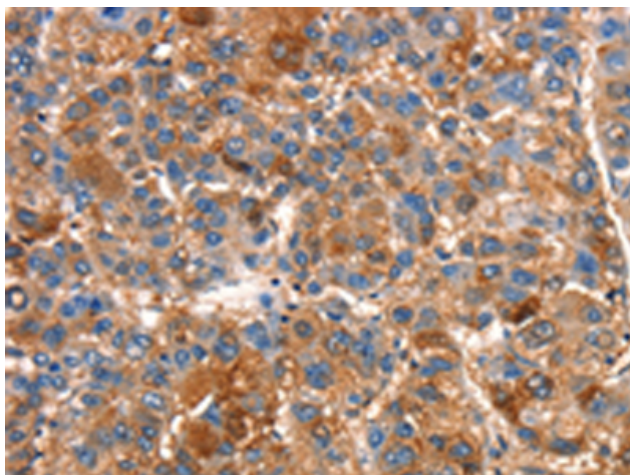
Purification: Antigen affinity purification

Species Reactivity: Human, Mouse

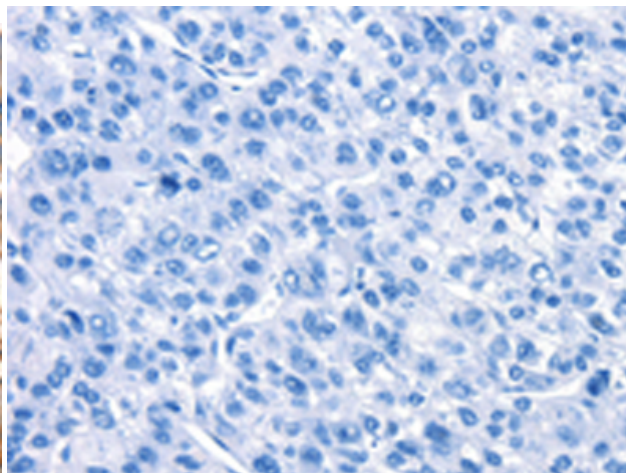
Constituents: PBS (without Mg²⁺ and Ca²⁺), pH 7.4, 150 mM NaCl, 0.05% Sodium Azide and 40% glycerol

Research Areas: Cell Biology

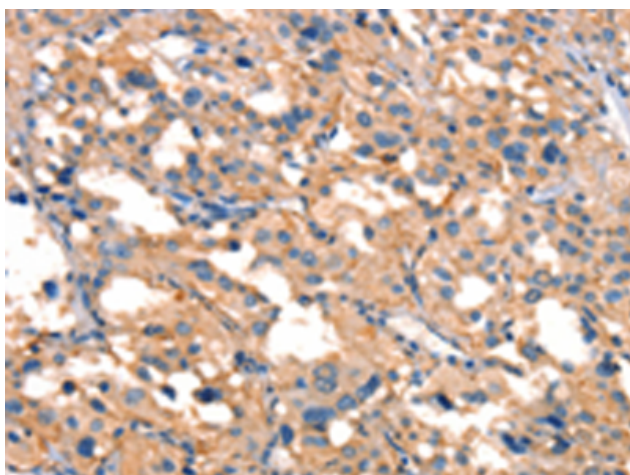
Storage & Shipping: Store at -20°C. Avoid repeated freezing and thawing



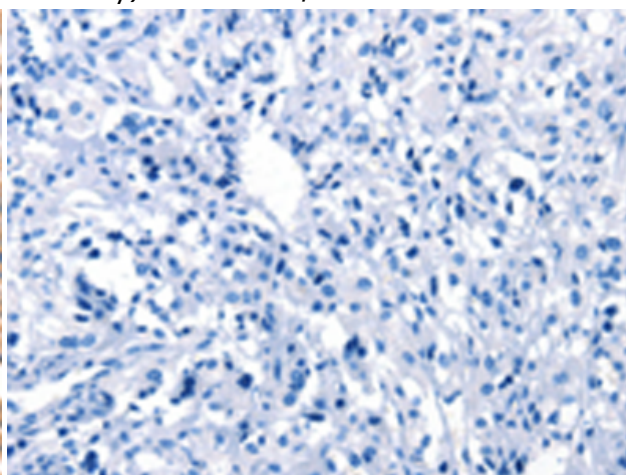
Immunohistochemistry analysis of paraffin embedded Human liver cancer tissue using 213828 (SMURF1 Antibody) at a dilution of 1/15 (Cytoplasm).



In comparison with the IHC on the left, the same paraffin-embedded Human liver cancer tissue is first treated with the synthetic peptide and then with 213828 (Anti-SMURF1 Antibody) at dilution 1/15.



The image on the left is immunohistochemistry of paraffin-embedded Human gastric cancer tissue using 213828 (Anti-SMURF1 Antibody) at a dilution of 1/15.



In comparison with the IHC on the left, the same paraffin-embedded Human gastric cancer tissue is first treated with synthetic peptide and then with D160909 (Anti-SMURF1 Antibody) at dilution 1/15.