

SMYD2 RABBIT PAB

Cat.#: S221129

Product Name: Anti-SMYD2 Rabbit Polyclonal Antibody

Synonyms: KMT3C; HSKM-B; ZMYND14

UNIPROT ID: Q9NRG4 (Gene Accession - NP_064582)

Background: SET domain-containing proteins, such as SMYD2, catalyze lysine methylation (Brown et al., 2006 [PubMed 16805913]).

Immunogen: Synthetic peptide of human SMYD2

Applications: ELISA, WB, IHC

Recommended Dilutions: IHC: 25-100;WB: 200-1000;ELISA: 1000-2000

Host Species: Rabbit

Clonality: Rabbit Polyclonal

Isotype: Immunogen-specific rabbit IgG

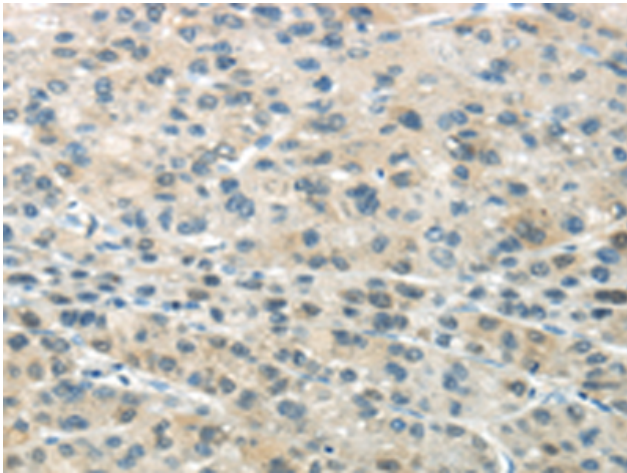
Purification: Antigen affinity purification

Species Reactivity: Human, Mouse, Rat

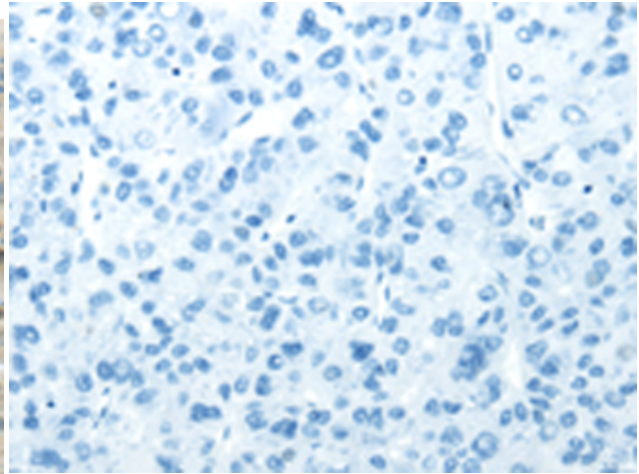
Constituents: PBS (without Mg²⁺ and Ca²⁺), pH 7.4, 150 mM NaCl, 0.05% Sodium Azide and 40% glycerol

Research Areas: Epigenetics and Nuclear Signaling

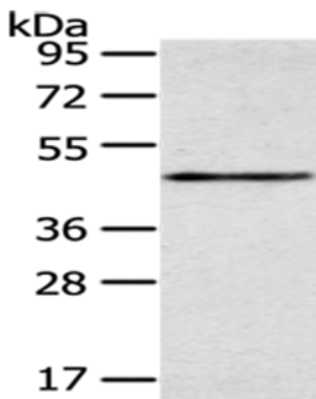
Storage & Shipping: Store at -20°C. Avoid repeated freezing and thawing



Immunohistochemistry analysis of paraffin embedded Human liver cancer tissue using 221129(SMYD2 Antibody) at a dilution of 1/35(Cytoplasm).



In comparison with the IHC on the left, the same paraffin-embedded Human liver cancer tissue is first treated with the synthetic peptide and then with 221129(Anti-SMYD2 Antibody) at dilution 1/35.



Gel: 8%SDS-PAGE, Lysate: 40 μ g;
Lane: Mouse heart tissue;
Primary antibody: 221129(SMYD2 Antibody) at dilution 1/350;
Secondary antibody: Goat anti rabbit IgG at 1/8000 dilution;
Exposure time: 2 minutes