

## SNAIL RABBIT PAB

**Cat.#:** S216789

**Product Name:** Anti-SNAIL Rabbit Polyclonal Antibody

**Synonyms:** SNA; SNAH; SNAIL; SLUGH2; SNAIL1; dJ710H13.1

**UNIPROT ID:** O95863 (Gene Accession - BC012910 )

**Background:** The Drosophila embryonic protein snail is a zinc finger transcriptional repressor which downregulates the expression of ectodermal genes within the mesoderm. The nuclear protein encoded by this gene is structurally similar to the Drosophila snail protein, and is also thought to be critical for mesoderm formation in the developing embryo. At least two variants of a similar processed pseudogene have been found on chromosome 2.

**Immunogen:** Fusion protein of human SNAIL

**Applications:** ELISA, WB, IHC

**Recommended Dilutions:** IHC: 50-200;WB: 200-1000;ELISA: 2000-5000

**Host Species:** Rabbit

**Clonality:** Rabbit Polyclonal

**Isotype:** Immunogen-specific rabbit IgG

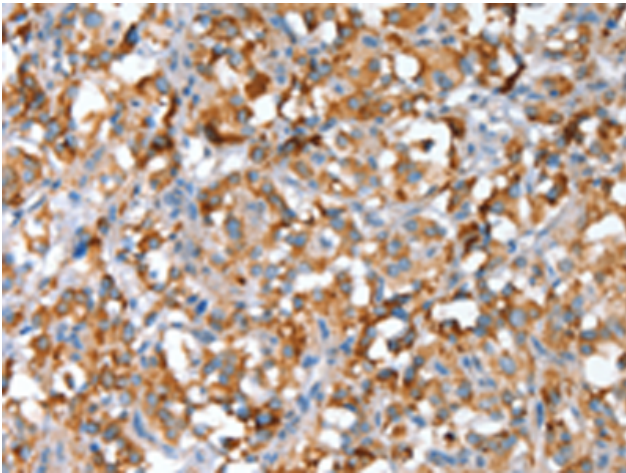
**Purification:** Antigen affinity purification

**Species Reactivity:** Human, Mouse

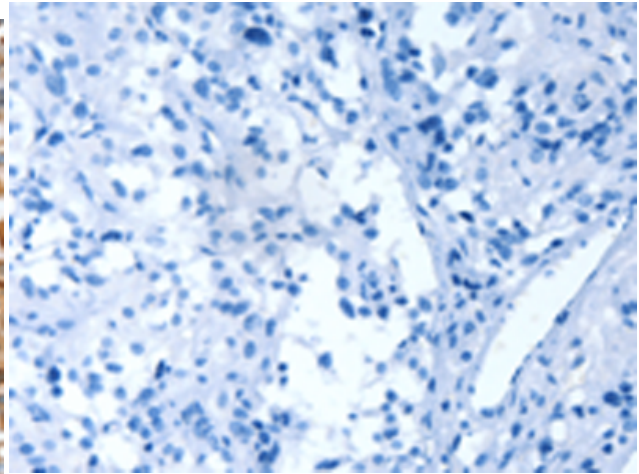
**Constituents:** PBS (without Mg<sup>2+</sup> and Ca<sup>2+</sup>), pH 7.4, 150 mM NaCl, 0.05% Sodium Azide and 40% glycerol

**Research Areas:** Epigenetics and Nuclear Signaling, Cancer, Neuroscience, Cardiovascular, Stem Cells, Developmental Biology

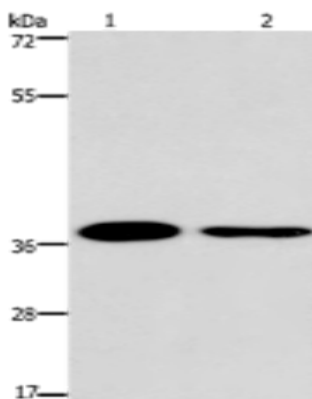
**Storage & Shipping:** Store at -20°C. Avoid repeated freezing and thawing



Immunohistochemistry analysis of paraffin embedded Human thyroid cancer tissue using 216789(SNAIL Antibody) at a dilution of 1/30(Cytoplasm).



In comparison with the IHC on the left, the same paraffin-embedded Human thyroid cancer tissue is first treated with the fusion protein and then with 216789(Anti-SNAIL Antibody) at dilution 1/30.



Gel: 6%SDS-PAGE, Lysate: 40  $\mu$ g;  
Lane 1-2: 293T cells, A549 cells;  
Primary antibody: 216789(SNAIL Antibody) at dilution 1/200;  
Secondary antibody: Goat anti rabbit IgG at 1/8000 dilution;  
Exposure time: 5 minutes