

SNAI2 RABBIT PAB

Cat.#: S216785

Product Name: Anti-SNAI2 Rabbit Polyclonal Antibody

Synonyms: SLUG; WS2D; SLUGH; SLUGH1; SNAIL2

UNIPROT ID: O43623 (Gene Accession - BC014890)

Background: This gene encodes a member of the Snail family of C2H2-type zinc finger transcription factors. The encoded protein acts as a transcriptional repressor that binds to E-box motifs and is also likely to repress E-cadherin transcription in breast carcinoma. This protein is involved in epithelial-mesenchymal transitions and has antiapoptotic activity. Mutations in this gene may be associated with sporadic cases of neural tube defects.

Immunogen: Fusion protein of human SNAI2

Applications: ELISA, IHC

Recommended Dilutions: IHC: 50-200; ELISA: 5000-10000

Host Species: Rabbit

Clonality: Rabbit Polyclonal

Isotype: Immunogen-specific rabbit IgG

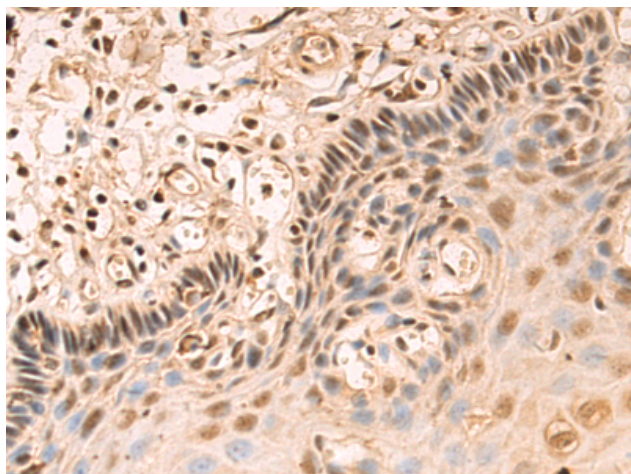
Purification: Antigen affinity purification

Species Reactivity: Human, Mouse, Rat

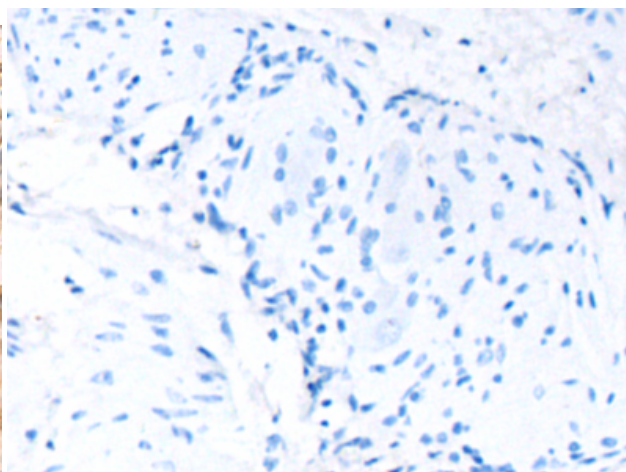
Constituents: PBS (without Mg²⁺ and Ca²⁺), pH 7.4, 150 mM NaCl, 0.05% Sodium Azide and 40% glycerol

Research Areas: Neuroscience, Epigenetics and Nuclear Signaling, Cancer, Cardiovascular, Stem Cells, Developmental Biology

Storage & Shipping: Store at -20°C. Avoid repeated freezing and thawing



Immunohistochemistry analysis of paraffin embedded Human esophagus cancer tissue using 216785(SNAI2 Antibody) at a dilution of 1/75(Nucleus).



In comparison with the IHC on the left, the same paraffin-embedded Human esophagus cancer tissue is first treated with the fusion protein and then with 216785(Anti-SNAI2 Antibody) at dilution 1/75.