

SNAP25 RABBIT MAB

Cat.#: N263554

Product Name: Anti-SNAP25 Rabbit Monoclonal Antibody

Synonyms: Synaptosomal-associated protein 25; SNAP-25; Super protein; SUP; Synaptosomal-associated 25 kDa protein; SNAP25; SNAP

UNIPROT ID: P60880

Background: SNAP25 forms a core complex with the SNARE proteins syntaxin and synaptobrevin to mediate synaptic vesicle fusion with the plasma membrane during Ca²⁺-dependent exocytosis. This complex is responsible for exocytosis of the neurotransmitter γ -aminobutyric acid (GABA). Neurotransmitter release is inhibited by proteolysis of SNAP25 by botulinum toxins A and E. SNAP25 plays a secondary role as a Q-SNARE involved in endosome fusion; the protein is associated with genetic susceptibility to attention-deficit hyperactivity disorder (ADHD).

Immunogen: A synthetic peptide of human SNAP25

Applications: WB,ICC/IF,IP

Recommended Dilutions: WB: 1/500-1/1000 IF: 1/50-1/200 IP: 1/20

Host Species: Rabbit

Clonality: Rabbit Monoclonal

Clone ID: R07-1D7

MW: Calculated MW: 23 kDa; Observed MW: 23 kDa

Isotype: IgG

Purification: Affinity Purified

Species Reactivity: Human,Mouse,Rat

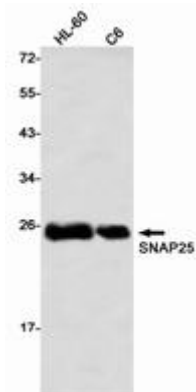
Conjugation: Unconjugated

Modification: Unmodified

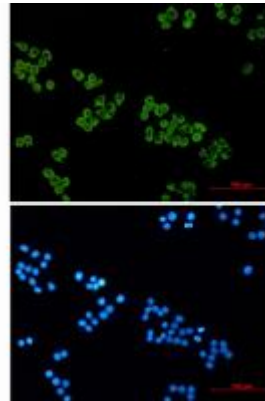
Constituents: PBS (without Mg²⁺ and Ca²⁺), pH 7.3 containing 50% glycerol, 0.5% BSA and 0.02% sodium azide

Research Areas: NeuroscienceyyyyyySNAP25

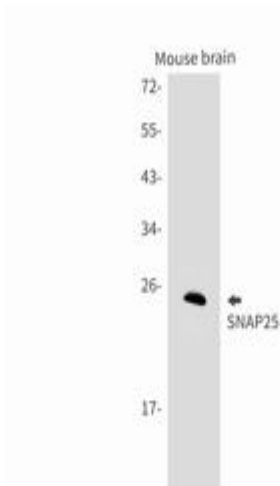
Storage & Shipping: Store at -20°C. Avoid repeated freezing and thawing



Western blot analysis of SNAP25 in HL-60, C6 lysates using SNAP25 antibody



Immunocytochemistry analysis of SNAP25 (green) in Hela using SNAP25 antibody, and DAPI (blue).



Western blot analysis of SNAP25 in mouse brain lysates using SNAP25 antibody.