

## SNIP1 RABBIT PAB

**Cat.#:** S219380

**Product Name:** Anti-SNIP1 Rabbit Polyclonal Antibody

**Synonyms:** PML1; PMRED

**UNIPROT ID:** Q8TAD8 (Gene Accession - BC027040 )

**Background:** This gene encodes a protein that contains a coiled-coil motif and C-terminal forkhead-associated (FHA) domain. The encoded protein functions as a transcriptional coactivator that increases c-Myc activity and inhibits transforming growth factor beta (TGF-beta) and nuclear factor kappa-B (NF-kB) signaling. The encoded protein also regulates the stability of cyclin D1 mRNA, and may play a role in cell proliferation and cancer progression. Mutations in this gene are a cause of psychomotor retardation, epilepsy, and craniofacial dysmorphism (PMRED).

**Immunogen:** Fusion protein of human SNIP1

**Applications:** ELISA, WB, IHC

**Recommended Dilutions:** IHC: 50-200;WB: 1000-5000;ELISA: 5000-10000

**Host Species:** Rabbit

**Clonality:** Rabbit Polyclonal

**Isotype:** Immunogen-specific rabbit IgG

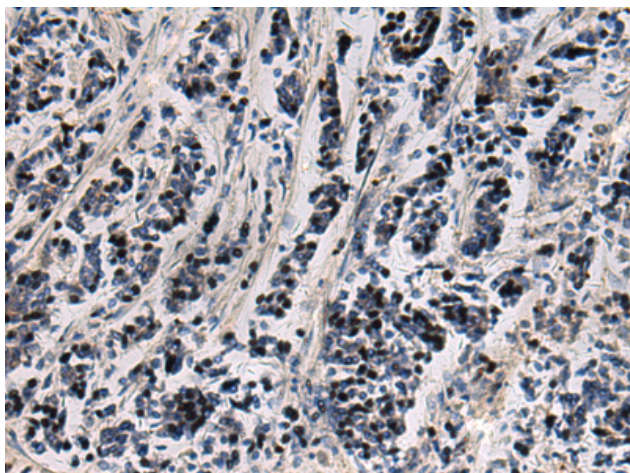
**Purification:** Antigen affinity purification

**Species Reactivity:** Human, Mouse, Rat

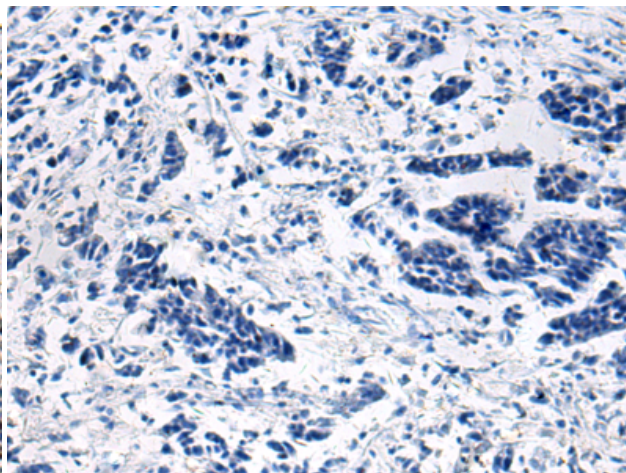
**Constituents:** PBS (without Mg<sup>2+</sup> and Ca<sup>2+</sup>), pH 7.4, 150 mM NaCl, 0.05% Sodium Azide and 40% glycerol

**Research Areas:** Signal Transduction, Epigenetics and Nuclear Signaling

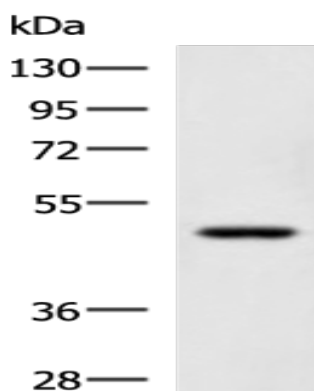
**Storage & Shipping:** Store at -20°C. Avoid repeated freezing and thawing



Immunohistochemistry analysis of paraffin embedded Human breast cancer tissue using 219380(SNIP1 Antibody) at a dilution of 1/80(Nucleus).



In comparison with the IHC on the left, the same paraffin-embedded Human breast cancer tissue is first treated with the fusion protein and then with 219380(Anti-SNIP1 Antibody) at dilution 1/80.



Gel: 8%SDS-PAGE, Lysate: 40  $\mu$ g;  
Lane: TM4 cell lysate;  
Primary antibody: 219380(SNIP1 Antibody) at dilution 1/1150;  
Secondary antibody: HRP-conjugated Goat anti rabbit IgG at 1/5000 dilution;  
Exposure time: 30 seconds