

SNRPB2 RABBIT PAB

Cat.#: S219023

Product Name: Anti-SNRPB2 Rabbit Polyclonal Antibody

Synonyms: Msl1; U2B'

UNIPROT ID: P08579 (Gene Accession - BC018022)

Background: The protein encoded by this gene associates with stem loop IV of U2 small nuclear ribonucleoprotein (U2 snRNP) in the presence of snRNP-A'. The encoded protein may play a role in pre-mRNA splicing. Autoantibodies from patients with systemic lupus erythematosus frequently recognize epitopes on the encoded protein. Two transcript variants encoding the same protein have been found for this gene.

Immunogen: Fusion protein of human SNRPB2

Applications: ELISA, WB, IHC

Recommended Dilutions: IHC: 50-300;WB: 1000-5000;ELISA: 5000-10000

Host Species: Rabbit

Clonality: Rabbit Polyclonal

Isotype: Immunogen-specific rabbit IgG

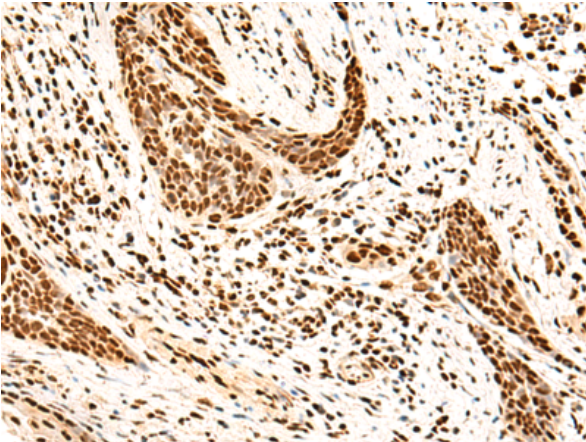
Purification: Antigen affinity purification

Species Reactivity: Human, Mouse

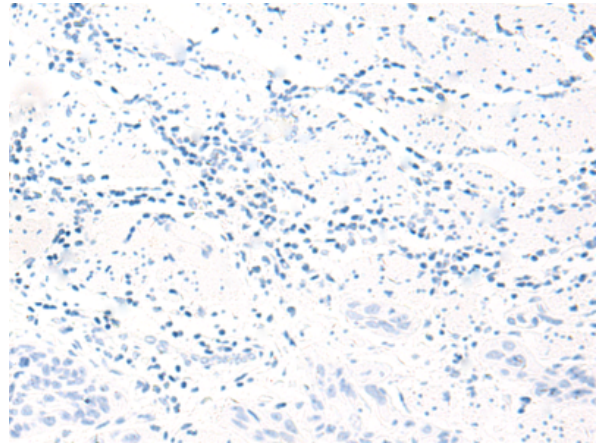
Constituents: PBS (without Mg²⁺ and Ca²⁺), pH 7.4, 150 mM NaCl, 0.05% Sodium Azide and 40% glycerol

Research Areas: Epigenetics and Nuclear Signaling

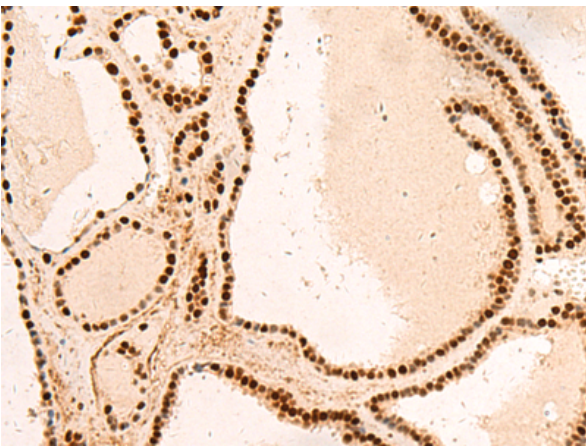
Storage & Shipping: Store at -20°C. Avoid repeated freezing and thawing



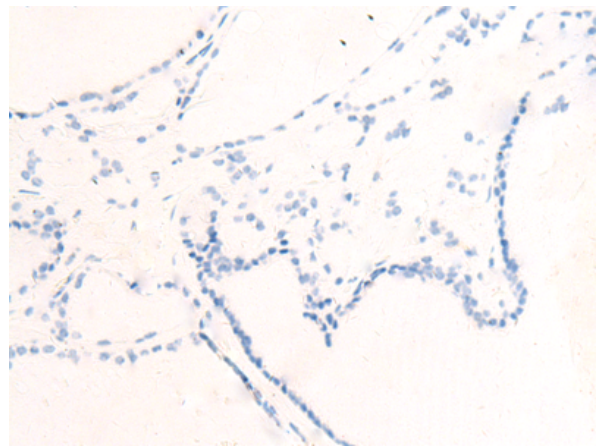
Immunohistochemistry analysis of paraffin embedded Human esophagus cancer tissue using 219023(SNRPB2 Antibody) at a dilution of 1/75(Nucleus).



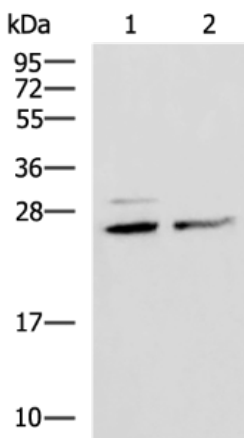
In comparison with the IHC on the left, the same paraffin-embedded Human esophagus cancer tissue is first treated with the fusion protein and then with 219023(Anti-SNRPB2 Antibody) at dilution 1/75.



The image on the left is immunohistochemistry of paraffin-embedded Human thyroid cancer tissue using 219023(Anti-SNRPB2 Antibody) at a dilution of 1/75.



In comparison with the IHC on the left, the same paraffin-embedded Human thyroid cancer tissue is first treated with fusion protein and then with D225670(Anti-SNRPB2 Antibody) at dilution 1/75.



Gel: 12%SDS-PAGE, Lysate: 40 µg;
Lane 1-2: Hela and K562 cell lysates;
Primary antibody: 219023(SNRPB2 Antibody) at dilution 1/1600;
Secondary antibody: HRP-conjugated Goat anti rabbit IgG at 1/5000 dilution;
Exposure time: 3 seconds



Product Description

Pioneering GTPase and Oncogene Product Development since 2010
