

SNRPG RABBIT PAB

Cat.#: S222166

Product Name: Anti-SNRPG Rabbit Polyclonal Antibody

Synonyms: SMG; Sm-G

UNIPROT ID: P62308 (Gene Accession - NP_003087)

Background: The protein encoded by this gene is a component of the U1, U2, U4, and U5 small nuclear ribonucleoprotein complexes, precursors of the spliceosome. The encoded protein may also be a part of the U7 small nuclear ribonucleoprotein complex which participates in the processing of the 3' end of histone transcripts. Several transcript variants encoding different isoforms have been found for this gene.

Immunogen: Synthetic peptide of human SNRPG

Applications: ELISA, WB, IHC

Recommended Dilutions: IHC: 20-100;WB: 200-1000;ELISA: 5000-10000

Host Species: Rabbit

Clonality: Rabbit Polyclonal

Isotype: Immunogen-specific rabbit IgG

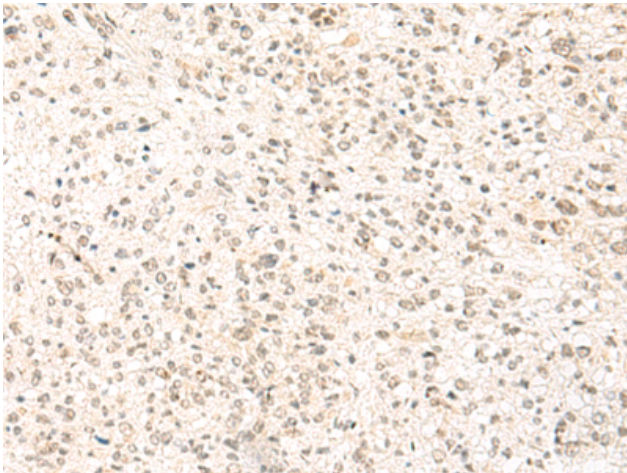
Purification: Antigen affinity purification

Species Reactivity: Human, Mouse

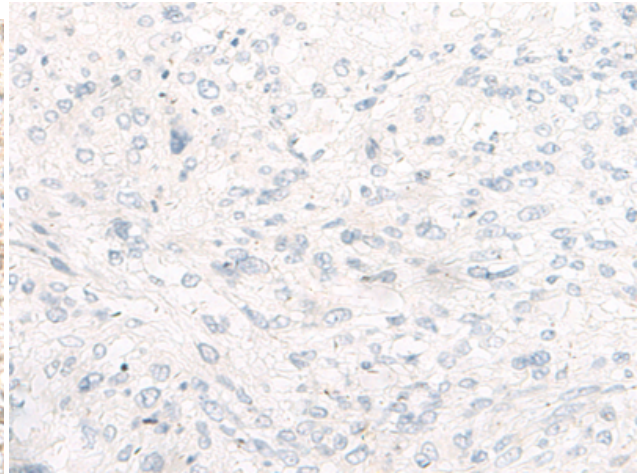
Constituents: PBS (without Mg²⁺ and Ca²⁺), pH 7.4, 150 mM NaCl, 0.05% Sodium Azide and 40% glycerol

Research Areas: Epigenetics and Nuclear Signaling

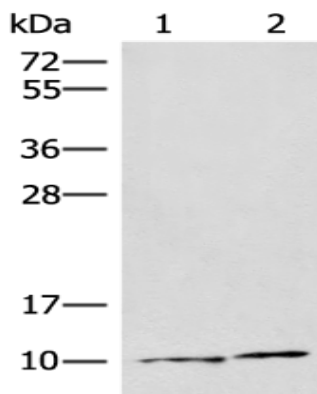
Storage & Shipping: Store at -20°C. Avoid repeated freezing and thawing



Immunohistochemistry analysis of paraffin embedded Human liver cancer tissue using 222166 (SNRPG Antibody) at a dilution of 1/30 (Nucleus).



In comparison with the IHC on the left, the same paraffin-embedded Human liver cancer tissue is first treated with the synthetic peptide and then with 222166 (Anti-SNRPG Antibody) at dilution 1/30.



Gel: 12% SDS-PAGE, Lysate: 40 μ g;
Lane 1-2: Jurkat and 293T cell lysates;
Primary antibody: 222166 (SNRPG Antibody) at dilution 1/350;
Secondary antibody: Goat anti rabbit IgG at 1/8000 dilution;
Exposure time: 1 minute