

SNX16 RABBIT PAB

Cat.#: S219567

Product Name: Anti-SNX16 Rabbit Polyclonal Antibody

Synonyms:

UNIPROT ID: P57768 (Gene Accession - BC033630)

Background: This gene encodes a member of the sorting nexin family. Members of this family contain a phox (PX) domain, which is a phosphoinositide binding domain, and are involved in intracellular trafficking. The protein encoded by this gene associates with late endosome membranes as is involved in tubule formation, cholesterol transport, and transport of tetraspanin CD81. The encoded protein also inhibits cell migration and tumorigenesis.

Immunogen: Fusion protein of human SNX16

Applications: ELISA, IHC

Recommended Dilutions: IHC: 50–200; ELISA: 5000–10000

Host Species: Rabbit

Clonality: Rabbit Polyclonal

Isotype: Immunogen-specific rabbit IgG

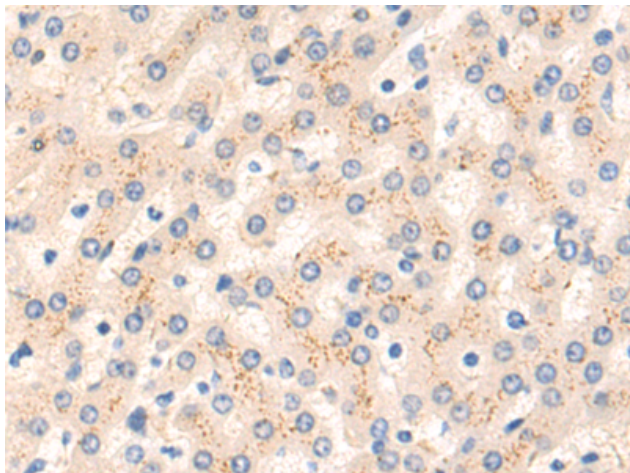
Purification: Antigen affinity purification

Species Reactivity: Human, Mouse, Rat

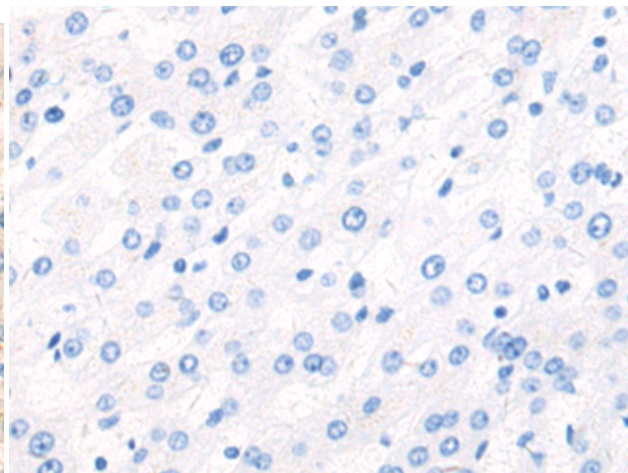
Constituents: PBS (without Mg²⁺ and Ca²⁺), pH 7.4, 150 mM NaCl, 0.05% Sodium Azide and 40% glycerol

Research Areas: Signal Transduction

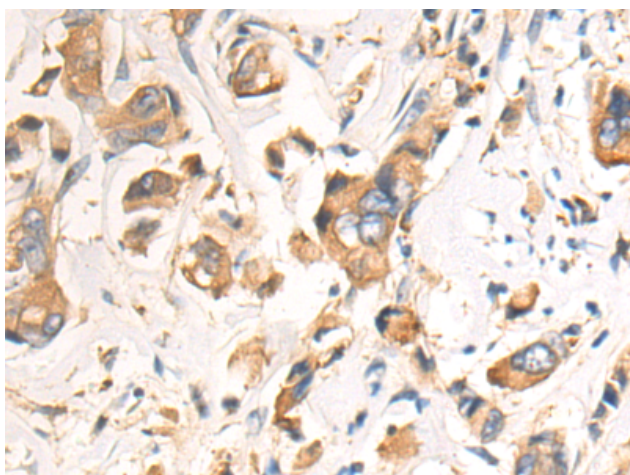
Storage & Shipping: Store at -20°C. Avoid repeated freezing and thawing



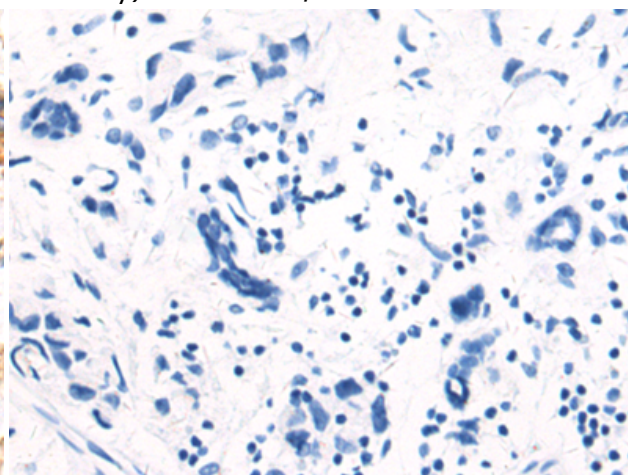
Immunohistochemistry analysis of paraffin embedded Human liver cancer tissue using 219567(SNX16 Antibody) at a dilution of 1/75(Cytoplasm).



In comparison with the IHC on the left, the same paraffin-embedded Human liver cancer tissue is first treated with the fusion protein and then with 219567(Anti-SNX16 Antibody) at dilution 1/75.



The image on the left is immunohistochemistry of paraffin-embedded Human breast cancer tissue using 219567(Anti-SNX16 Antibody) at a dilution of 1/75.



In comparison with the IHC on the left, the same paraffin-embedded Human breast cancer tissue is first treated with fusion protein and then with D227778(Anti-SNX16 Antibody) at dilution 1/75.