

SNX20 RABBIT PAB

Cat.#: S217846

Product Name: Anti-SNX20 Rabbit Polyclonal Antibody

Synonyms: SLIC1

UNIPROT ID: Q7Z614 (Gene Accession - BC063423)

Background: SNX20 interacts with the cytoplasmic domain of PSGL1 (SELPLG; MIM 600738) and cycles PSGL1 into endosomes.

Immunogen: Fusion protein of human SNX20

Applications: ELISA, IHC

Recommended Dilutions: IHC: 25-100; ELISA: 2000-5000

Host Species: Rabbit

Clonality: Rabbit Polyclonal

Isotype: Immunogen-specific rabbit IgG

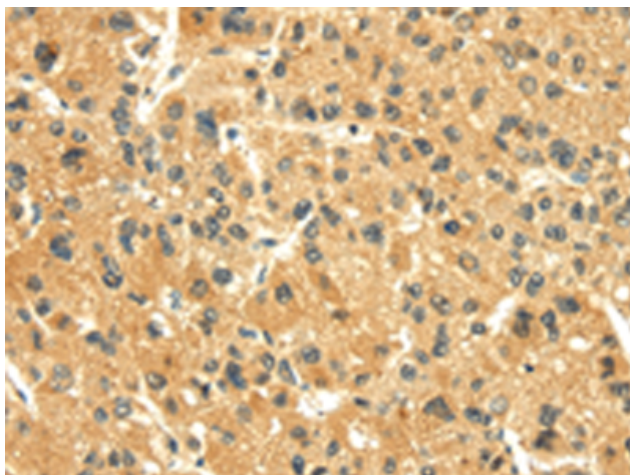
Purification: Antigen affinity purification

Species Reactivity: Human

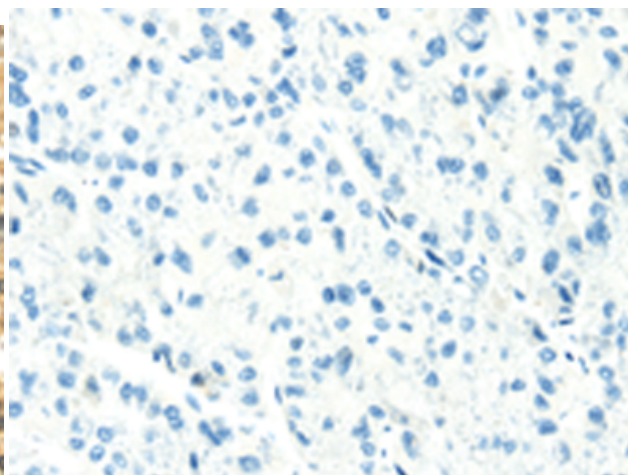
Constituents: PBS (without Mg²⁺ and Ca²⁺), pH 7.4, 150 mM NaCl, 0.05% Sodium Azide and 40% glycerol

Research Areas: Signal Transduction

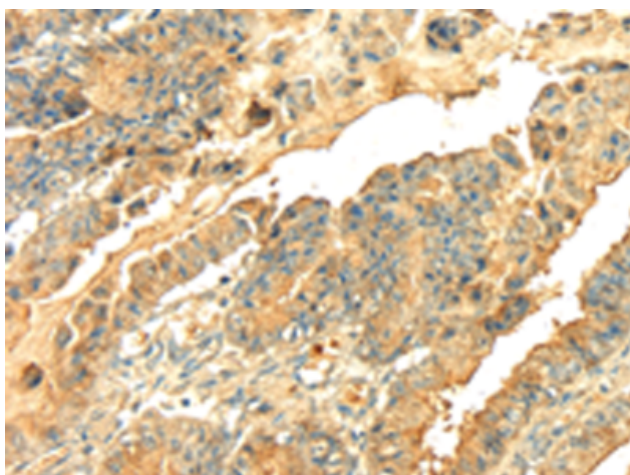
Storage & Shipping: Store at -20°C. Avoid repeated freezing and thawing



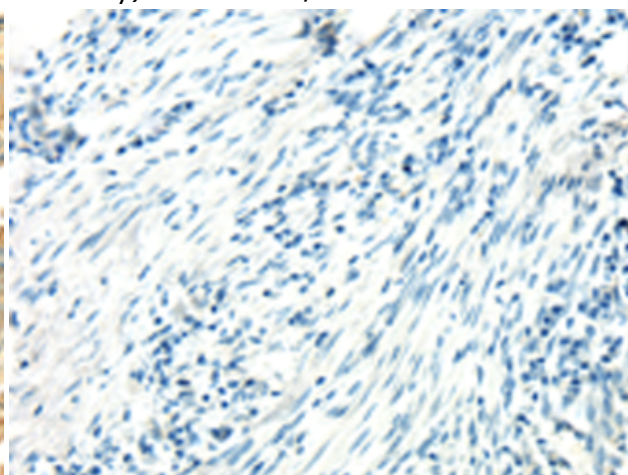
Immunohistochemistry analysis of paraffin embedded Human liver cancer tissue using 217846(SNX20 Antibody) at a dilution of 1/20(Cytoplasm).



In comparison with the IHC on the left, the same paraffin-embedded Human liver cancer tissue is first treated with the fusion protein and then with 217846(Anti-SNX20 Antibody) at dilution 1/20.



The image on the left is immunohistochemistry of paraffin-embedded Human esophagus cancer tissue using 217846(Anti-SNX20 Antibody) at a dilution of 1/20.



In comparison with the IHC on the left, the same paraffin-embedded Human esophagus cancer tissue is first treated with fusion protein and then with D223206(Anti-SNX20 Antibody) at dilution 1/20.