

SNX24 RABBIT PAB

Cat.#: S219564

Product Name: Anti-SNX24 Rabbit Polyclonal Antibody

Synonyms: SBBI31; PRO1284

UNIPROT ID: Q9Y343 (Gene Accession - BC010886)

Background: Predicted to enable phosphatidylinositol phosphate binding activity. Predicted to be involved in protein transport. Predicted to be located in cytoplasmic vesicle membrane.

Immunogen: Fusion protein of human SNX24

Applications: ELISA, IHC

Recommended Dilutions: IHC: 50-200; ELISA: 5000-10000

Host Species: Rabbit

Clonality: Rabbit Polyclonal

Isotype: Immunogen-specific rabbit IgG

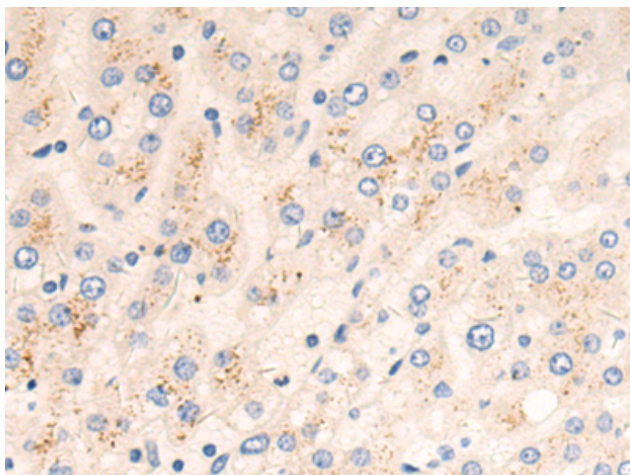
Purification: Antigen affinity purification

Species Reactivity: Human, Mouse, Rat

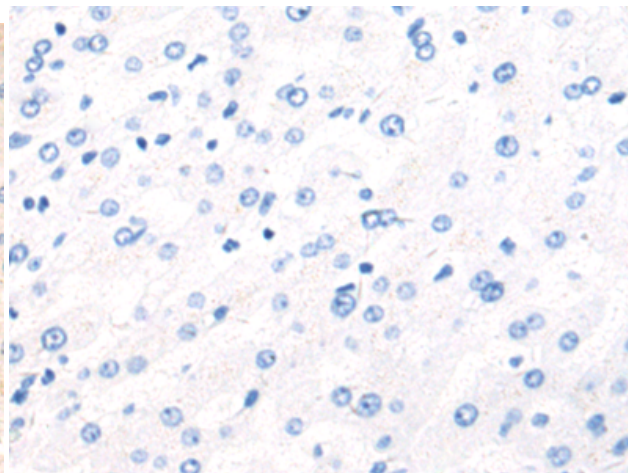
Constituents: PBS (without Mg²⁺ and Ca²⁺), pH 7.4, 150 mM NaCl, 0.05% Sodium Azide and 40% glycerol

Research Areas: Signal Transduction

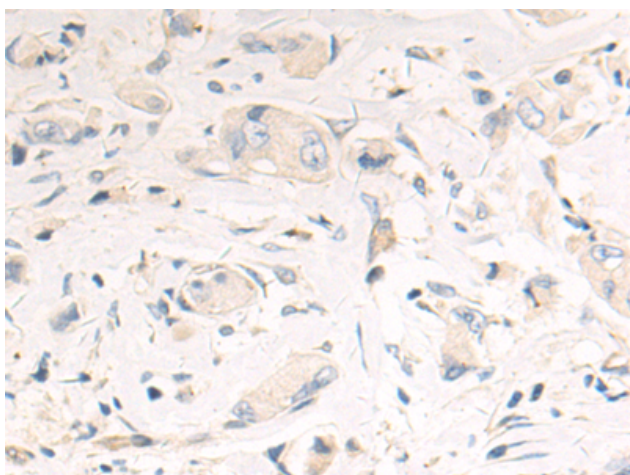
Storage & Shipping: Store at -20°C. Avoid repeated freezing and thawing



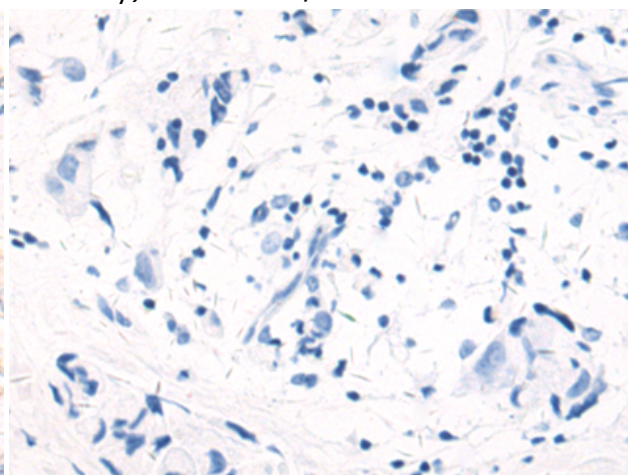
Immunohistochemistry analysis of paraffin embedded Human liver cancer tissue using 219564(SNX24 Antibody) at a dilution of 1/55(Cytoplasm).



In comparison with the IHC on the left, the same paraffin-embedded Human liver cancer tissue is first treated with the fusion protein and then with 219564(Anti-SNX24 Antibody) at dilution 1/55.



The image on the left is immunohistochemistry of paraffin-embedded Human breast cancer tissue using 219564(Anti-SNX24 Antibody) at a dilution of 1/55.



In comparison with the IHC on the left, the same paraffin-embedded Human breast cancer tissue is first treated with fusion protein and then with D227775(Anti-SNX24 Antibody) at dilution 1/55.