

SNX9 RABBIT MAB

Cat.#: N262894

Product Name: Anti-SNX9 Rabbit Monoclonal Antibody

Synonyms: SDPI; WISP; SH3PX1; SH3PXD3A

UNIPROT ID: Q9Y5X1

Background: Involved in endocytosis and intracellular vesicle trafficking, both during interphase and at the end of mitosis.

Immunogen: Recombinant protein of human SH3PX1

Applications: WB,IHC-F,IHC-P,ICC/IF,IP

Recommended Dilutions: WB: 1/500-1/1000 IHC: 1/50-1/100 IF: 1/50-1/200 IP: 1/20

Host Species: Rabbit

Clonality: Rabbit Monoclonal

Clone ID: R03-5I5

MW: Calculated MW: 67 kDa; Observed MW: 67 kDa

Isotype: IgG

Purification: Affinity Purified

Species Reactivity: Human,Mouse

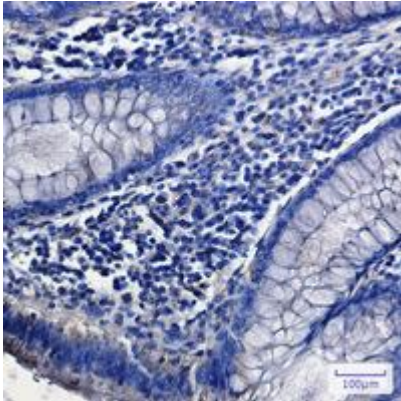
Conjugation: Unconjugated

Modification: Unmodified

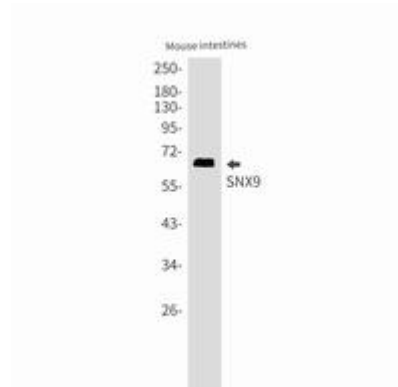
Constituents: PBS (without Mg²⁺ and Ca²⁺), pH 7.3 containing 50% glycerol, 0.5% BSA and 0.02% sodium azide

Research Areas: Signal Transduction

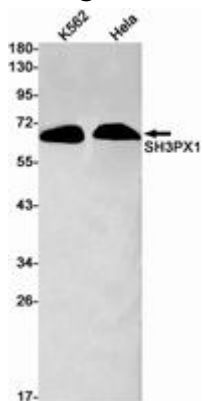
Storage & Shipping: Store at -20°C. Avoid repeated freezing and thawing



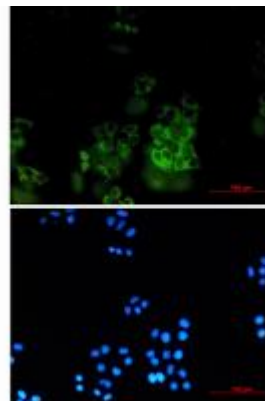
Immunohistochemistry analysis of paraffin-embedded Human colon cancer using SNX9 antibody. High-pressure and temperature Sodium Citrate pH 6.0 was used for antigen retrieval.



Western blot analysis of SNX9 in mouse intestines lysates using SNX9 antibody.



Western blot analysis of SH3PX1 in K562, HeLa lysates using SH3PX1 antibody.



Immunocytochemistry analysis of SNX9 (green) in HeLa using SNX9 antibody, and DAPI (blue).