

SOCS1 RABBIT PAB

Cat.#: S219997

Product Name: Anti-SOCS1 Rabbit Polyclonal Antibody

Synonyms: JAB; CIS1; SSI1; TIP3; CISH1; SSI-1; TIP-3; AISIMD; SOCS-1

UNIPROT ID: O15524 (Gene Accession - NP_003736)

Background: This gene encodes a member of the STAT-induced STAT inhibitor (SSI), also known as suppressor of cytokine signaling (SOCS), family. SSI family members are cytokine-inducible negative regulators of cytokine signaling. The expression of this gene can be induced by a subset of cytokines, including IL2, IL3 erythropoietin (EPO), CSF2/GM-CSF, and interferon (IFN)-gamma. The protein encoded by this gene functions downstream of cytokine receptors, and takes part in a negative feedback loop to attenuate cytokine signaling. Knockout studies in mice suggested the role of this gene as a modulator of IFN-gamma action, which is required for normal postnatal growth and survival.

Immunogen: Synthetic peptide of human SOCS1

Applications: ELISA, WB, IHC

Recommended Dilutions: IHC: 100-300;WB: 1000-5000;ELISA: 2000-10000

Host Species: Rabbit

Clonality: Rabbit Polyclonal

Isotype: Immunogen-specific rabbit IgG

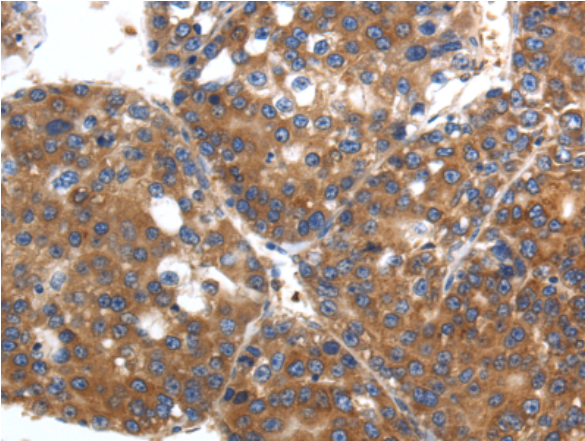
Purification: Antigen affinity purification

Species Reactivity: Human, Mouse, Rat

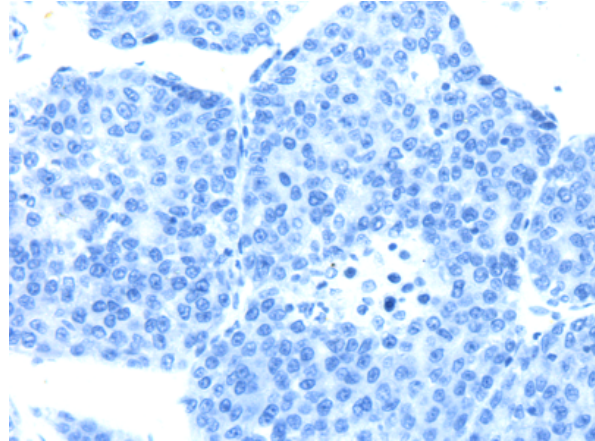
Constituents: PBS (without Mg²⁺ and Ca²⁺), pH 7.4, 150 mM NaCl, 0.05% Sodium Azide and 40% glycerol

Research Areas: Signal Transduction, Epigenetics and Nuclear Signaling, Immunology

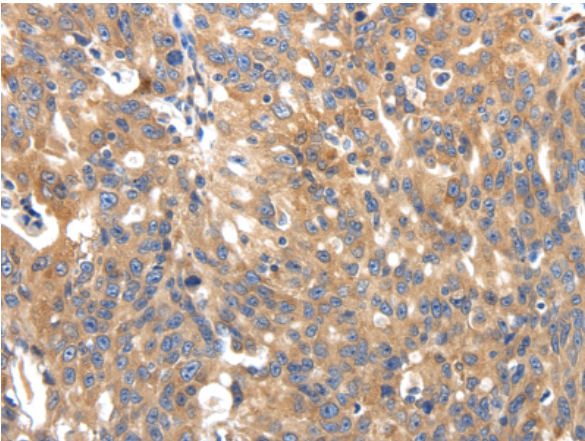
Storage & Shipping: Store at -20°C. Avoid repeated freezing and thawing



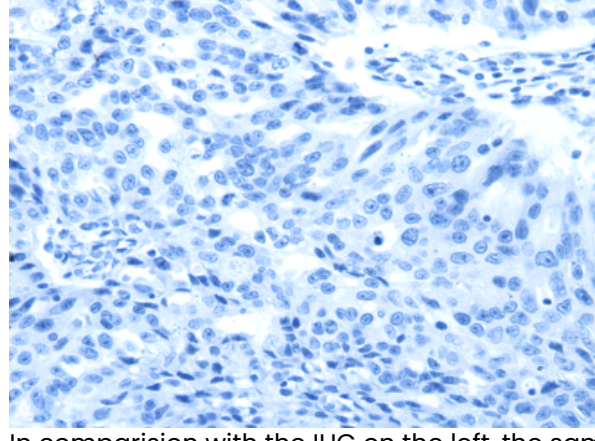
Immunohistochemistry analysis of paraffin embedded Human liver cancer tissue using 219997(SOCS1 Antibody) at a dilution of 1/90(Cytoplasm).



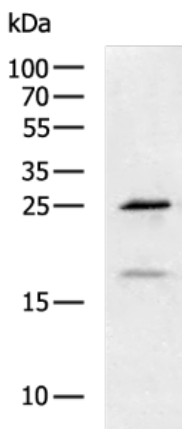
In comparison with the IHC on the left, the same paraffin-embedded Human liver cancer tissue is first treated with the synthetic peptide and then with 219997(Anti-SOCS1 Antibody) at dilution 1/90.



The image on the left is immunohistochemistry of paraffin-embedded Human ovarian cancer tissue using 219997(Anti-SOCS1 Antibody) at a dilution of 1/90.



In comparison with the IHC on the left, the same paraffin-embedded Human ovarian cancer tissue is first treated with synthetic peptide and then with D260748(Anti-SOCS1 Antibody) at dilution 1/90.



Gel: 12%SDS-PAGE, Lysate: 40 µg;
 Lane: 231 cell lysate;
 Primary antibody: 219997(SOCS1 Antibody) at dilution 1/1700;
 Secondary antibody: HRP-conjugated Goat anti rabbit IgG at 1/5000 dilution;
 Exposure time: 5 minutes



Product Description

Pioneering GTPase and Oncogene Product Development since 2010
