

SOCS6 RABBIT PAB

Cat.#: S216793

Product Name: Anti-SOCS6 Rabbit Polyclonal Antibody

Synonyms: CIS4; SSI4; CIS-4; SOCS4; STAI4; SOCS-4; SOCS-6; STAT4; HSPC060

UNIPROT ID: O14544 (Gene Accession - BC020082)

Background: The protein encoded by this gene contains a SH2 domain and a CIS homolog domain. The protein thus belongs to the cytokine-induced STAT inhibitor (CIS), also known as suppressor of cytokine signaling (SOCS) or STAT-induced STAT inhibitor (SSI), protein family. CIS family members are known to be cytokine-inducible negative regulators of cytokine signaling. The expression of this gene can be induced by GM-CSF and EPO in hematopoietic cells. A high expression level of this gene was found in factor-independent chronic myelogenous leukemia (CML) and erythroleukemia (HEL) cell lines.

Immunogen: Fusion protein of human SOCS6

Applications: ELISA, WB, IHC

Recommended Dilutions: IHC: 100-200;WB: 200-1000;ELISA: 5000-10000

Host Species: Rabbit

Clonality: Rabbit Polyclonal

Isotype: Immunogen-specific rabbit IgG

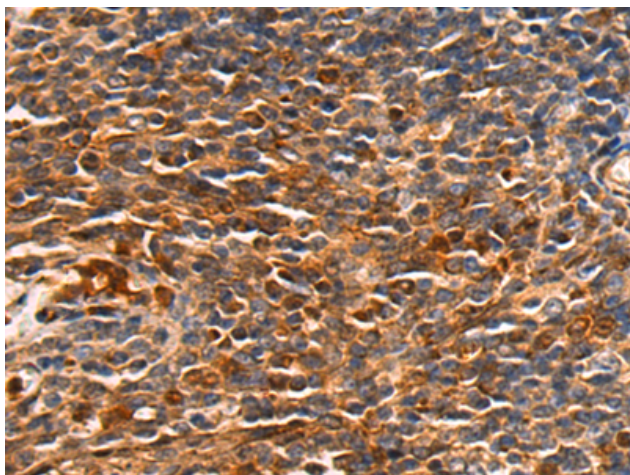
Purification: Antigen affinity purification

Species Reactivity: Human, Mouse

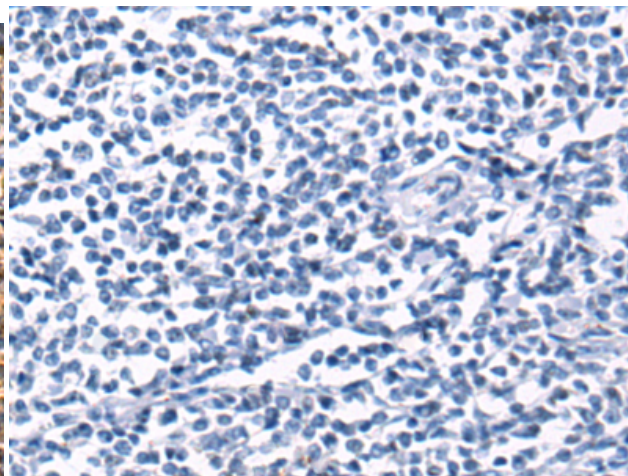
Constituents: PBS (without Mg²⁺ and Ca²⁺), pH 7.4, 150 mM NaCl, 0.05% Sodium Azide and 40% glycerol

Research Areas: Signal Transduction, Epigenetics and Nuclear Signaling

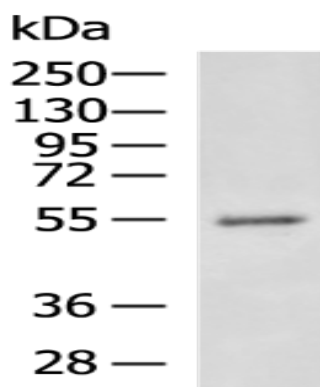
Storage & Shipping: Store at -20°C. Avoid repeated freezing and thawing



Immunohistochemistry analysis of paraffin embedded Human tonsil tissue using 216793(SOCS6 Antibody) at a dilution of 1/100(Cytoplasm).



In comparison with the IHC on the left, the same paraffin-embedded Human tonsil tissue is first treated with the fusion protein and then with 216793(Anti-SOCS6 Antibody) at dilution 1/100.



Gel: 8%SDS-PAGE, Lysate: 40 μ g;
Lane: Human placenta tissue lysate;
Primary antibody: 216793(SOCS6 Antibody) at dilution 1/300;
Secondary antibody: HRP-conjugated Goat anti rabbit IgG at 1/5000 dilution;
Exposure time: 3 minutes