

SOGA1 RABBIT PAB

Cat.#: S221651

Product Name: Anti-SOGA1 Rabbit Polyclonal Antibody

Synonyms: SOGA; KIAA0889; C20orf117

UNIPROT ID: O94964 (Gene Accession - NP_954650)

Background: Regulates autophagy by playing a role in the reduction of glucose production in an adiponectin- and insulin-dependent manner.

Immunogen: Synthetic peptide of human SOGA1

Applications: ELISA, IHC

Recommended Dilutions: IHC: 20-100; ELISA: 5000-10000

Host Species: Rabbit

Clonality: Rabbit Polyclonal

Isotype: Immunogen-specific rabbit IgG

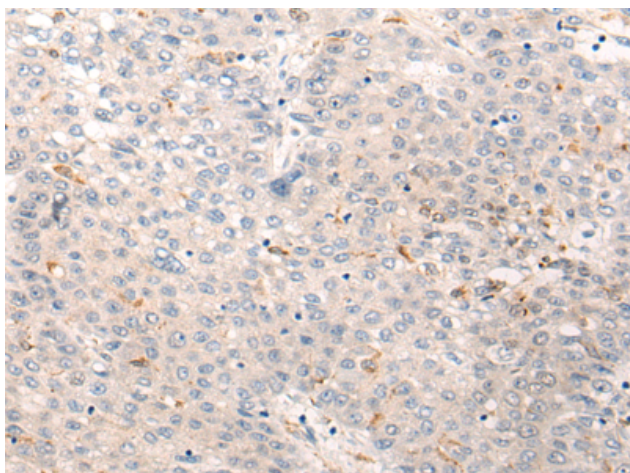
Purification: Antigen affinity purification

Species Reactivity: Human

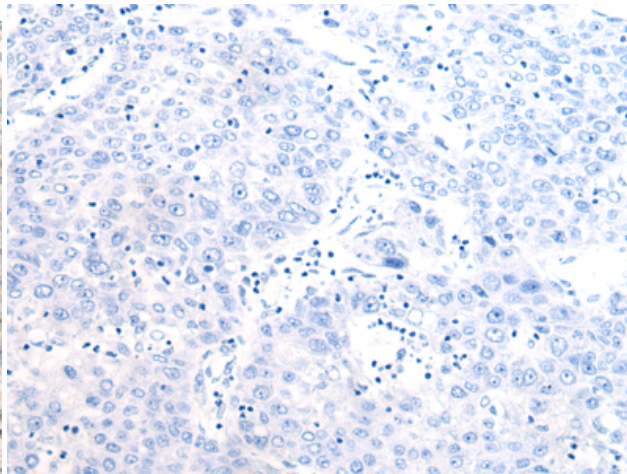
Constituents: PBS (without Mg²⁺ and Ca²⁺), pH 7.4, 150 mM NaCl, 0.05% Sodium Azide and 40% glycerol

Research Areas: Cell Biology

Storage & Shipping: Store at -20°C. Avoid repeated freezing and thawing



Immunohistochemistry analysis of paraffin embedded Human liver cancer tissue using 221651(SOGA1 Antibody) at a dilution of 1/30(Cytoplasm).



In comparison with the IHC on the left, the same paraffin-embedded Human liver cancer tissue is first treated with the synthetic peptide and then with 221651(Anti-SOGA1 Antibody) at dilution 1/30.