

SONIC HEDGEHOG RABBIT MAB

Cat.#: N262925

Product Name: Anti-Sonic Hedgehog Rabbit Monoclonal Antibody

Synonyms: Sonic hedgehog protein; SHH; HHG-1; Sonic hedgehog protein N-product; Sonic hedgehog protein C-product

UNIPROT ID: Q15465

Background: This gene encodes a protein that is instrumental in patterning the early embryo. It has been implicated as the key inductive signal in patterning of the ventral neural tube, the anterior-posterior limb axis, and the ventral somites. Of three human proteins showing sequence and functional similarity to the sonic hedgehog protein of *Drosophila*, this protein is the most similar.

Immunogen: A synthetic peptide of human Sonic Hedgehog

Applications: WB,IHC-F,IHC-P,ICC/IF

Recommended Dilutions: WB: 1/500-1/1000 IHC: 1/50-1/100 IF: 1/50-1/200

Host Species: Rabbit

Clonality: Rabbit Monoclonal

Clone ID: R06-9H9

MW: Calculated MW: 50 kDa; Observed MW: 50,27 kDa

Isotype: IgG

Purification: Affinity Purified

Species Reactivity: Human,Mouse

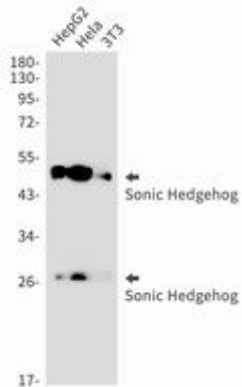
Conjugation: Unconjugated

Modification: Unmodified

Constituents: PBS (without Mg²⁺ and Ca²⁺), pH 7.3 containing 50% glycerol, 0.5% BSA and 0.02% sodium azide

Research Areas: Epigenetics and Nuclear Signaling

Storage & Shipping: Store at -20°C. Avoid repeated freezing and thawing



Western blot analysis of Sonic Hedgehog in HepG2, Hela, 3T3 lysates using Sonic Hedgehog antibody.