

SORBS2 RABBIT PAB

Cat.#: S219164

Product Name: Anti-SORBS2 Rabbit Polyclonal Antibody

Synonyms: ARGBP2; PRO0618

UNIPROT ID: O94875 (Gene Accession - BC011883)

Background: Arg and c-Abl represent the mammalian members of the Abelson family of non-receptor protein-tyrosine kinases. They interact with the Arg/Abl binding proteins via the SH3 domains present in the carboxy end of the latter group of proteins. This gene encodes the sorbin and SH3 domain containing 2 protein. It has three C-terminal SH3 domains and an N-terminal sorbin homology (SoHo) domain that interacts with lipid raft proteins. The subcellular localization of this protein in epithelial and cardiac muscle cells suggests that it functions as an adapter protein to assemble signaling complexes in stress fibers, and that it is a potential link between Abl family kinases and the actin cytoskeleton. Alternative splicing results in multiple transcript variants encoding different isoforms.

Immunogen: Fusion protein of human SORBS2

Applications: ELISA, WB, IHC

Recommended Dilutions: IHC: 150-300;WB: 1000-5000;ELISA: 5000-10000

Host Species: Rabbit

Clonality: Rabbit Polyclonal

Isotype: Immunogen-specific rabbit IgG

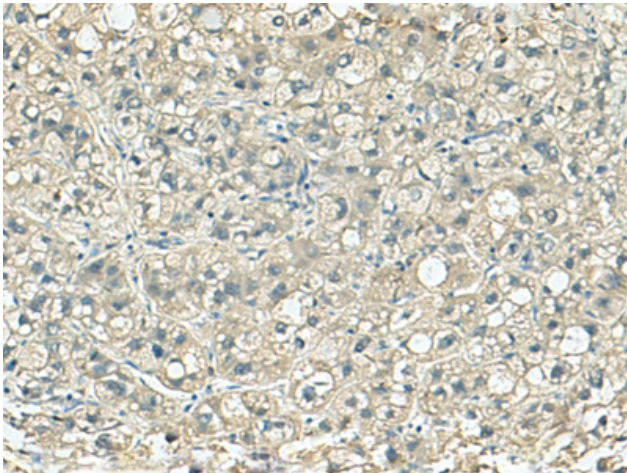
Purification: Antigen affinity purification

Species Reactivity: Human, Mouse, Rat

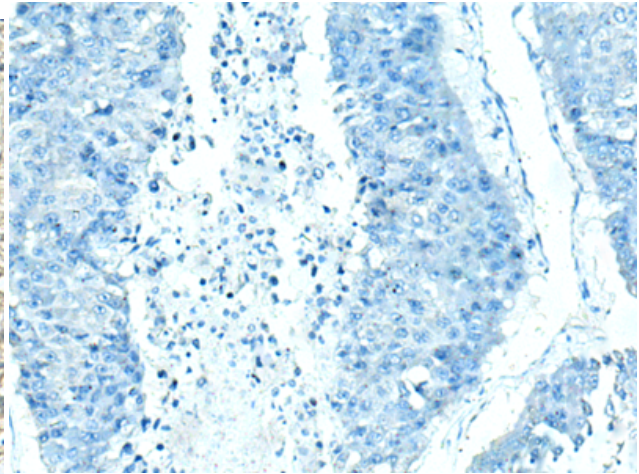
Constituents: PBS (without Mg²⁺ and Ca²⁺), pH 7.4, 150 mM NaCl, 0.05% Sodium Azide and 40% glycerol

Research Areas: Signal Transduction

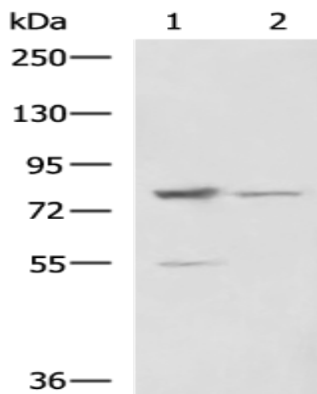
Storage & Shipping: Store at -20°C. Avoid repeated freezing and thawing



Immunohistochemistry analysis of paraffin embedded Human liver cancer tissue using 219164 (SORBS2 Antibody) at a dilution of 1/120 (Cytoplasm).



In comparison with the IHC on the left, the same paraffin-embedded Human liver cancer tissue is first treated with the fusion protein and then with 219164 (Anti-SORBS2 Antibody) at dilution 1/120.



Gel: 6% SDS-PAGE, Lysate: 40 μ g;
Lane 1-2: LO2 and 231 cell lysates;
Primary antibody: 219164 (SORBS2 Antibody) at dilution 1/800;
Secondary antibody: HRP-conjugated Goat anti rabbit IgG at 1/5000 dilution;
Exposure time: 10 seconds