

SORTILIN RABBIT MAB

Cat.#: N263556

Product Name: Anti-Sortilin Rabbit Monoclonal Antibody

Synonyms: 100 kDa NT receptor; Glycoprotein 95; Gp95; LDLCQ6; Neurotensin receptor 3; NT3; NTR3; SORT 1; Sortilin 1

UNIPROT ID: Q99523

Background: Functions as a sorting receptor in the Golgi compartment and as a clearance receptor on the cell surface. Required for protein transport from the Golgi apparatus to the lysosomes by a pathway that is independent of the mannose-6-phosphate receptor (M6PR).

Immunogen: Recombinant protein of human Sortilin/NT3

Applications: WB,IHC-P

Recommended Dilutions: WB: 1/500-1/1000 IHC: 1/50-1/100

Host Species: Rabbit

Clonality: Rabbit Monoclonal

Clone ID: R02-6B4

MW: Calculated MW: 92 kDa; Observed MW: 92 kDa

Isotype: IgG

Purification: Affinity Purified

Species Reactivity: Human,Rat

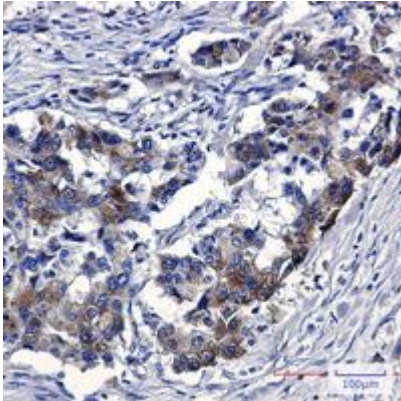
Conjugation: Unconjugated

Modification: Unmodified

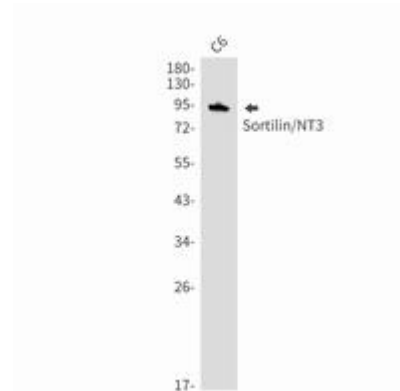
Constituents: PBS (without Mg²⁺ and Ca²⁺), pH 7.3 containing 50% glycerol, 0.5% BSA and 0.02% sodium azide

Research Areas: Neuroscience

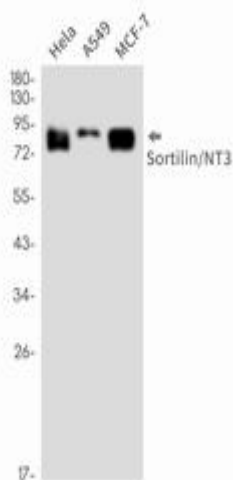
Storage & Shipping: Store at -20°C. Avoid repeated freezing and thawing



Immunohistochemistry analysis of paraffin-embedded Human lung cancer using Sortilin/NT3 antibody. High-pressure and temperature Sodium Citrate pH 6.0 was used for antigen retrieval.



Western blot analysis of Sortilin/NT3 in C6 lysates using Sortilin antibody.



Western blot analysis of Sortilin/NT3 in HeLa, A549, MCF-7 lysates using Sortilin/NT3 antibody.