

## SOX13 RABBIT PAB

**Cat.#:** S213971

**Product Name:** Anti-SOX13 Rabbit Polyclonal Antibody

**Synonyms:** ICA12; Sox-13

**UNIPROT ID:** Q9UN79 (Gene Accession - NP\_005677 )

**Background:** This gene encodes a member of the SOX (SRY-related HMG-box) family of transcription factors involved in the regulation of embryonic development and in the determination of cell fate. The encoded protein may act as a transcriptional regulator after forming a protein complex with other proteins. It has also been determined to be a type-1 diabetes autoantigen, also known as islet cell antibody 12.

**Immunogen:** Synthetic peptide of human SOX13

**Applications:** ELISA, WB, IHC

**Recommended Dilutions:** IHC: 50-100;WB: 500-2000;ELISA: 2000-5000

**Host Species:** Rabbit

**Clonality:** Rabbit Polyclonal

**Isotype:** Immunogen-specific rabbit IgG

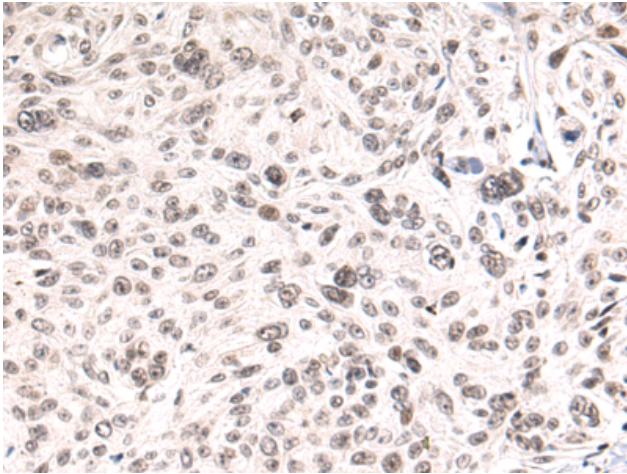
**Purification:** Antigen affinity purification

**Species Reactivity:** Human, Mouse

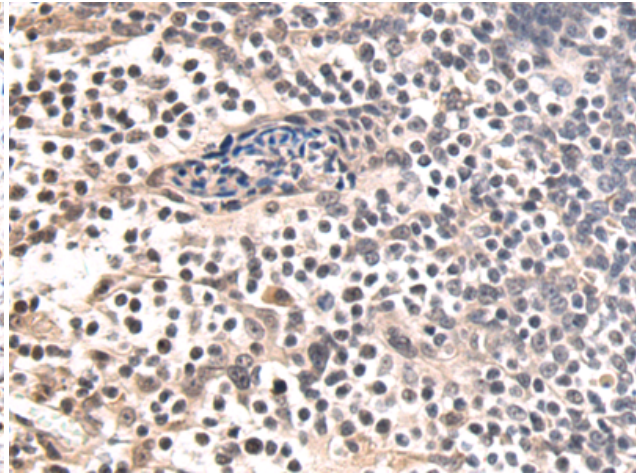
**Constituents:** PBS (without Mg<sup>2+</sup> and Ca<sup>2+</sup>), pH 7.4, 150 mM NaCl, 0.05% Sodium Azide and 40% glycerol

**Research Areas:** Epigenetics and Nuclear Signaling, Neuroscience

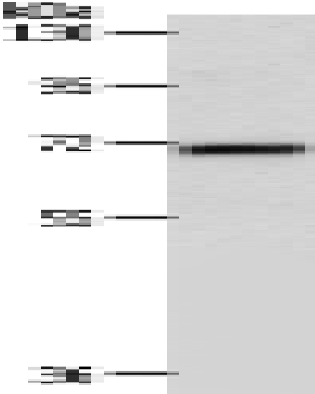
**Storage & Shipping:** Store at -20°C. Avoid repeated freezing and thawing



Immunohistochemistry analysis of paraffin-embedded Human cervical cancer tissue using 213971(SOX13 Antibody) at a dilution of 1/50(Nucleus).



Immunohistochemistry analysis of paraffin-embedded Human tonsil tissue using 213971(Anti-SOX13 Antibody) at a dilution of 1/50.



Gel: 10%SDS-PAGE, Lysate: 40 µg;  
Lane: Mouse liver tissue lysate;  
Primary antibody: 213971(SOX13 Antibody) at dilution 1/800;  
Secondary antibody: Goat anti rabbit IgG at 1/8000 dilution;  
Exposure time: 1 minute