

SP1 RABBIT MAB

Cat.#: N262927

Product Name: Anti-SP1 Rabbit Monoclonal Antibody

Synonyms: SP1; TSFP1; Transcription factor Sp1

UNIPROT ID: P08047

Background: SP1 is a transcription factor of the Sp1 C2H2-type zinc-finger protein family. Phosphorylated and activated by MAPK. Dephosphorylation by PTEN inhibits DNA binding. Binds to p38 in the nucleus.

Immunogen: Recombinant protein of human SP1

Applications: WB,IHC-F,IHC-P,ICC/IF,IP

Recommended Dilutions: WB: 1/500-1/1000 IHC: 1/50-1/100 IF: 1/50-1/200 IP: 1/20

Host Species: Rabbit

Clonality: Rabbit Monoclonal

Clone ID: R06-919

MW: Calculated MW: 81 kDa; Observed MW: 90 kDa

Isotype: IgG

Purification: Affinity Purified

Species Reactivity: Human

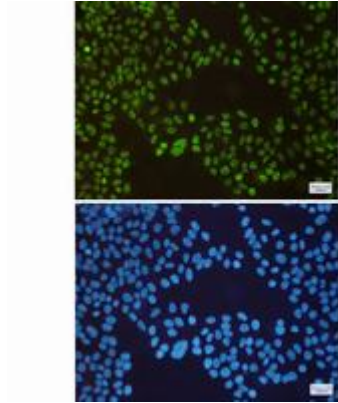
Conjugation: Unconjugated

Modification: Unmodified

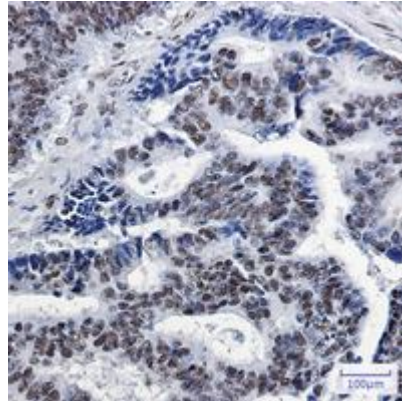
Constituents: PBS (without Mg²⁺ and Ca²⁺), pH 7.3 containing 50% glycerol, 0.5% BSA and 0.02% sodium azide

Research Areas: Epigenetics and Nuclear Signaling

Storage & Shipping: Store at -20°C. Avoid repeated freezing and thawing



Immunocytochemistry analysis of SP1(green) in Hela using SP1 antibody, and DAPI(blue)



Immunohistochemistry analysis of paraffin-embedded Human colon cancer using SP1 antibody. High-pressure and temperature Sodium Citrate pH 6.0 was used for antigen retrieval.