

SP1 RABBIT PAB

Cat.#: N225767

Product Name: Anti-SP1 Rabbit pAb

Synonyms: SP1; TSFP1; Transcription factor Sp1

UNIPROT ID: P08047

Background: SP1 is a transcription factor of the Sp1 C2H2-type zinc-finger protein family. Phosphorylated and activated by MAPK. Dephosphorylation by PTEN inhibits DNA binding. Binds to p38 in the nucleus.

Immunogen: A synthesized peptide derived from human SP1

Applications: WB,IHC-P,ICC/IF

Recommended Dilutions: WB: 1/500-1/1000 IHC: 1/50-1/100 IF: 1/50-1/200

Host Species: Rabbit

Clonality: Rabbit Polyclonal

Clone ID: -

MW: Calculated MW: 81 kDa; Observed MW: 90 kDa

Isotype: IgG

Purification: Affinity Chromatography

Species Reactivity: Human

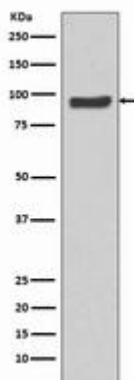
Conjugation: Unconjugated

Modification: Unmodified

Constituents: PBS (without Mg²⁺ and Ca²⁺), pH 7.3 containing 50% glycerol, 0.5% BSA and 0.02% sodium azide

Research Areas: Epigenetics and Nuclear Signaling

Storage & Shipping: Store at -20°C. Avoid repeated freezing and thawing



Western blot analysis of SP1 in HeLa lysates using SP1 antibody.



Product Description

Pioneering GTPase and Oncogene Product Development since 2010
