

## SPACA3 RABBIT PAB

**Cat.#:** S218128

**Product Name:** Anti-SPACA3 Rabbit Polyclonal Antibody

**Synonyms:** CT54; LYC3; LYZL3; SLLP1; ALLP17; 1700025M08Rik

**UNIPROT ID:** Q8IXA5 (Gene Accession - BC029867)

**Background:** SPACA3 (sperm acrosome associated 3), also known as sperm lysozyme-like protein 1, lysozyme-like protein 3, lysozyme-like acrosomal sperm-specific secretory protein ALLP-17, cancer/testis antigen 54 (CT54), LYC3, SPRASA or LYZL3, is a 215 amino acid protein that participates in the fusion and adhesion of sperm and egg plasma membrane during fertilization. Identified as a novel cancer/testis antigen in hematologic malignancies, SPACA3 has the ability to elicit B-cell immune responses in patients with cancer and is considered a potential target for immunotherapy. A member of the glycosyl hydrolase 22 family which is expressed in testis, placenta and epididymis, SPACA3 exists as two alternatively spliced isoforms; SPACA3 isoform 1 is a single-pass type II membrane protein of the sperm acrosome whereas SPACA3 isoform 2 is a secreted protein. Sperm surface membrane protein that may be involved in sperm-egg plasma membrane adhesion and fusion during fertilization. It could be a potential receptor for the egg oligosaccharide residue N-acetylglucosamine, which is present in the extracellular matrix over the egg plasma membrane. The processed form has no detectable bacteriolytic activity in vitro.

**Immunogen:** Fusion protein of human SPACA3

**Applications:** ELISA, IHC

**Recommended Dilutions:** IHC: 25-100; ELISA: 5000-10000

**Host Species:** Rabbit

**Clonality:** Rabbit Polyclonal

**Isotype:** Immunogen-specific rabbit IgG

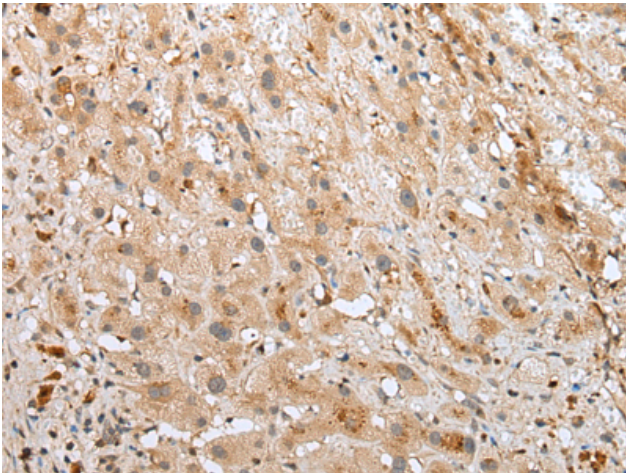
**Purification:** Antigen affinity purification

**Species Reactivity:** Human

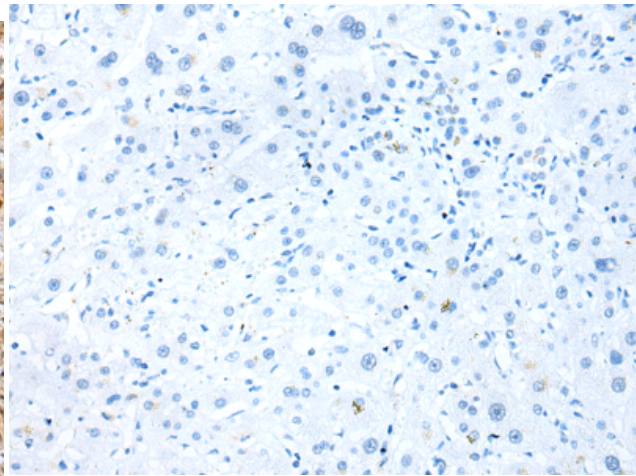
**Constituents:** PBS (without Mg<sup>2+</sup> and Ca<sup>2+</sup>), pH 7.4, 150 mM NaCl, 0.05% Sodium Azide and 40% glycerol

**Research Areas:** Signal Transduction, Immunology, Developmental Biology

**Storage & Shipping:** Store at -20°C. Avoid repeated freezing and thawing



Immunohistochemistry analysis of paraffin embedded Human liver cancer tissue using 218128 (SPACA3 Antibody) at a dilution of 1/30 (Secreted and Cytoplasm).



In comparison with the IHC on the left, the same paraffin-embedded Human liver cancer tissue is first treated with the fusion protein and then with 218128 (Anti-SPACA3 Antibody) at dilution 1/30.