

## SPAG4 RABBIT PAB

**Cat.#:** S220000

**Product Name:** Anti-SPAG4 Rabbit Polyclonal Antibody

**Synonyms:** SUN4; CT127

**UNIPROT ID:** Q9NPE6 (Gene Accession - NP\_003107 )

**Background:** The mammalian sperm flagellum contains two cytoskeletal structures associated with the axoneme: the outer dense fibers surrounding the axoneme in the midpiece and principal piece and the fibrous sheath surrounding the outer dense fibers in the principal piece of the tail. Defects in these structures are associated with abnormal tail morphology, reduced sperm motility, and infertility. In the rat, the protein encoded by this gene associates with an outer dense fiber protein via a leucine zipper motif and localizes to the microtubules of the manchette and axoneme during sperm tail development. Alternative splicing results in multiple transcript variants encoding different isoforms.

**Immunogen:** Synthetic peptide of human SPAG4

**Applications:** ELISA, WB, IHC

**Recommended Dilutions:** IHC: 50-200;WB: 500-2000;ELISA: 5000-10000

**Host Species:** Rabbit

**Clonality:** Rabbit Polyclonal

**Isotype:** Immunogen-specific rabbit IgG

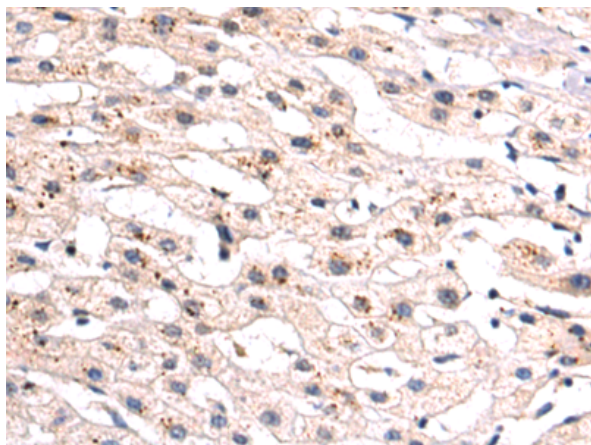
**Purification:** Antigen affinity purification

**Species Reactivity:** Human

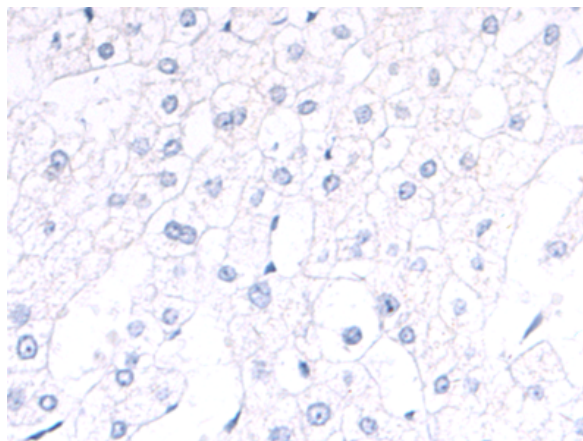
**Constituents:** PBS (without Mg<sup>2+</sup> and Ca<sup>2+</sup>), pH 7.4, 150 mM NaCl, 0.05% Sodium Azide and 40% glycerol

**Research Areas:** Signal Transduction

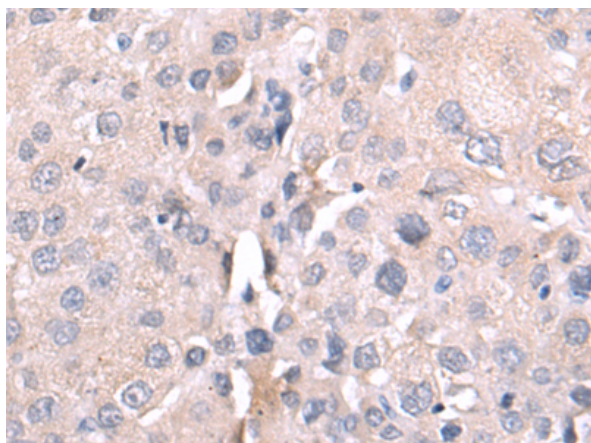
**Storage & Shipping:** Store at -20°C. Avoid repeated freezing and thawing



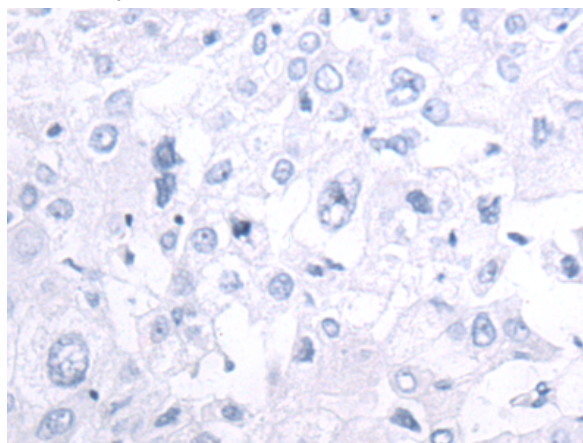
Immunohistochemistry analysis of paraffin embedded Human prostate cancer tissue using 220000(SPAG4 Antibody) at a dilution of 1/50(Cytoplasm and Cell membrane).



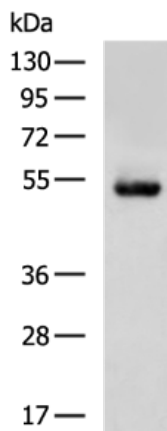
In comparison with the IHC on the left, the same paraffin-embedded Human prostate cancer tissue is first treated with the synthetic peptide and then with 220000(Anti-SPAG4 Antibody) at dilution 1/50.



The image on the left is immunohistochemistry of paraffin-embedded Human liver cancer tissue using 220000(Anti-SPAG4 Antibody) at a dilution of 1/50.



In comparison with the IHC on the left, the same paraffin-embedded Human liver cancer tissue is first treated with synthetic peptide and then with D260752(Anti-SPAG4 Antibody) at dilution 1/50.



Gel: 8%SDS-PAGE, Lysate: 40 µg;  
Lane: Human liver cancer tissue;  
Primary antibody: 220000(SPAG4 Antibody) at dilution 1/800;  
Secondary antibody: HRP-conjugated Goat anti rabbit IgG at 1/5000 dilution;  
Exposure time: 3 minutes



# Product Description

Pioneering GTPase and Oncogene Product Development since 2010

---