

SPATA16 RABBIT PAB

Cat.#: S216865

Product Name: Anti-SPATA16 Rabbit Polyclonal Antibody

Synonyms: SPGF6; NYD-SP12

UNIPROT ID: Q9BXB7 (Gene Accession - BC034496)

Background: This gene encodes a testis-specific protein that belongs to the tetratricopeptide repeat-like superfamily. The encoded protein localizes to the Golgi apparatus and may play a role in spermatogenesis. [provided by RefSeq, May 2010]

Immunogen: Fusion protein of human SPATA16

Applications: ELISA, IHC

Recommended Dilutions: IHC: 150-300; ELISA: 5000-10000

Host Species: Rabbit

Clonality: Rabbit Polyclonal

Isotype: Immunogen-specific rabbit IgG

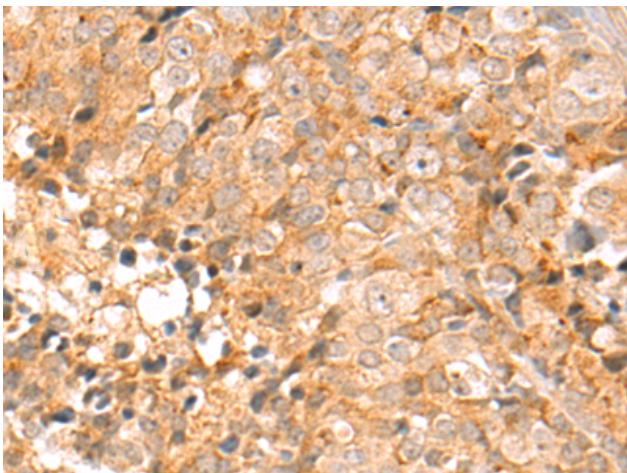
Purification: Antigen affinity purification

Species Reactivity: Human, Mouse

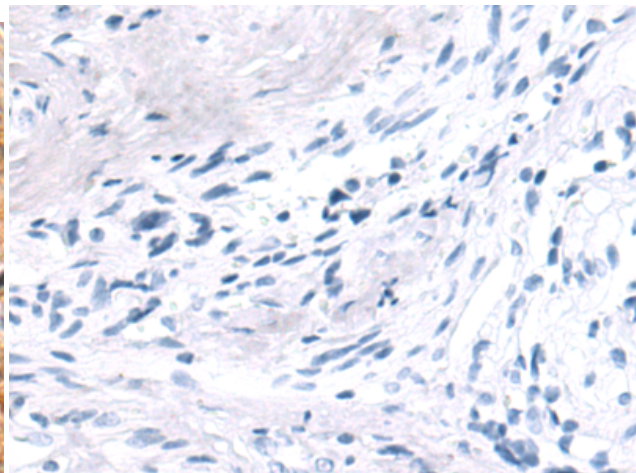
Constituents: PBS (without Mg²⁺ and Ca²⁺), pH 7.4, 150 mM NaCl, 0.05% Sodium Azide and 40% glycerol

Research Areas: Developmental Biology

Storage & Shipping: Store at -20°C. Avoid repeated freezing and thawing



Immunohistochemistry analysis of paraffin embedded Human colorectal cancer tissue using 216865 (SPATA16 Antibody) at a dilution of 1/150 (Cytoplasm).



In comparison with the IHC on the left, the same paraffin-embedded Human colorectal cancer tissue is first treated with the fusion protein and then with 216865 (Anti-SPATA16 Antibody) at dilution 1/150.