

## SPATA20 RABBIT PAB

**Cat.#:** S220209

**Product Name:** Anti-SPATA20 Rabbit Polyclonal Antibody

**Synonyms:** SSP411; Tisp78

**UNIPROT ID:** Q8TB22 (Gene Accession - NP\_001245301)

**Background:** The protein may play a role in fertility regulation. It were significantly upregulated in individual bile samples from Cholangiocarcinoma patients by Western blotting and Immunohistochemistry, relative to normal tissues. It acts as a potential serum diagnostic biomarker for Cholangiocarcinoma.

**Immunogen:** Synthetic peptide of human SPATA20

**Applications:** ELISA, WB, IHC

**Recommended Dilutions:** IHC: 100-300; WB: 500-2000; ELISA: 2000-10000

**Host Species:** Rabbit

**Clonality:** Rabbit Polyclonal

**Isotype:** Immunogen-specific rabbit IgG

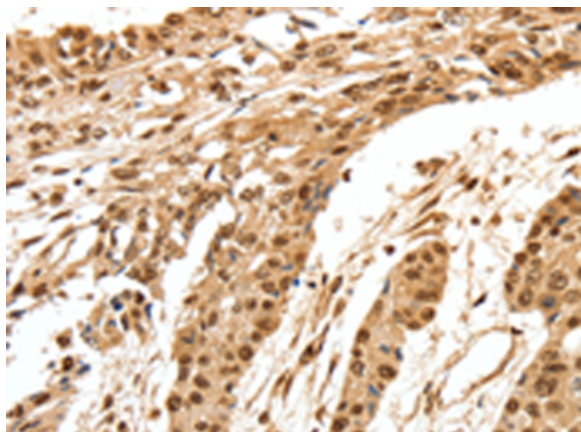
**Purification:** Antigen affinity purification

**Species Reactivity:** Human

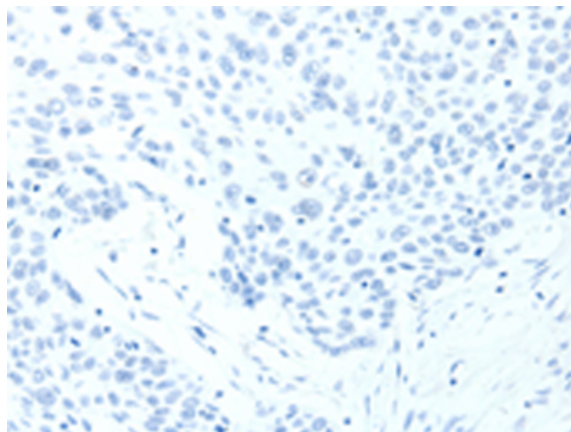
**Constituents:** PBS (without Mg<sup>2+</sup> and Ca<sup>2+</sup>), pH 7.4, 150 mM NaCl, 0.05% Sodium Azide and 40% glycerol

**Research Areas:** Cancer, Developmental Biology

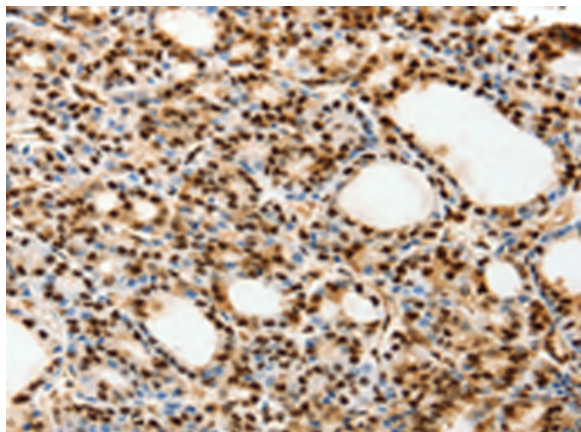
**Storage & Shipping:** Store at -20°C. Avoid repeated freezing and thawing



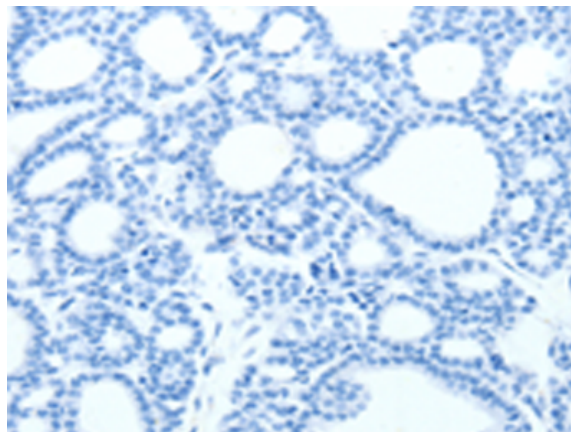
Immunohistochemistry analysis of paraffin embedded Human esophagus cancer tissue using 220209(SPATA20 Antibody) at a dilution of 1/70(Nucleus).



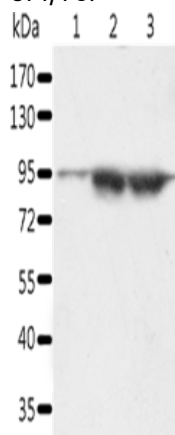
In comparison with the IHC on the left, the same paraffin-embedded Human esophagus cancer tissue is first treated with the synthetic peptide and then with 220209(Anti-SPATA20 Antibody) at dilution 1/70.



The image on the left is immunohistochemistry of paraffin-embedded Human thyroid cancer tissue using 220209(Anti-SPATA20 Antibody) at a dilution of 1/70.



In comparison with the IHC on the left, the same paraffin-embedded Human thyroid cancer tissue is first treated with synthetic peptide and then with D261141(Anti-SPATA20 Antibody) at dilution 1/70.



Gel: 10%SDS-PAGE, Lysate: 60 µg;  
Lane 1-3: A549 cells, Incap cells, human seminoma tissue;  
Primary antibody: 220209(SPATA20 Antibody) at dilution 1/1000;  
Secondary antibody: Goat anti rabbit IgG at 1/8000 dilution;  
Exposure time: 5 minutes



# Product Description

Pioneering GTPase and Oncogene Product Development since 2010

---