

SPDL1 RABBIT PAB

Cat.#: S216804

Product Name: Anti-SPDL1 Rabbit Polyclonal Antibody

Synonyms: CCDC99

UNIPROT ID: Q96EA4 (Gene Accession - BC012568)

Background: This gene encodes a coiled-coil domain-containing protein that functions in mitotic spindle formation and chromosome segregation. The encoded protein plays a role in coordinating microtubule attachment by promoting recruitment of dynein proteins, and in mitotic checkpoint signaling.

Immunogen: Fusion protein of human SPDL1

Applications: ELISA, WB, IHC

Recommended Dilutions: IHC: 100-200;WB: 500-2000;ELISA: 5000-10000

Host Species: Rabbit

Clonality: Rabbit Polyclonal

Isotype: Immunogen-specific rabbit IgG

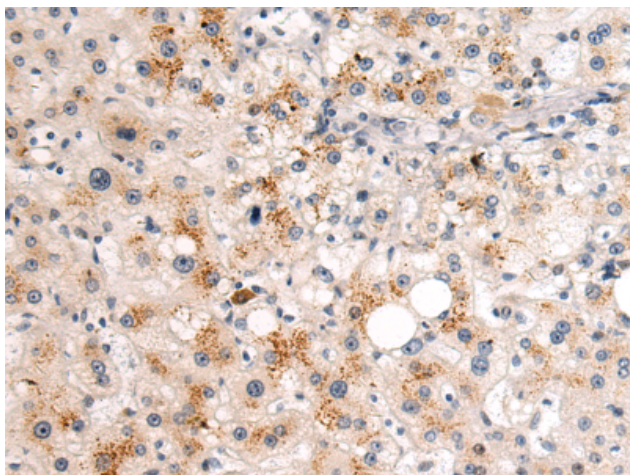
Purification: Antigen affinity purification

Species Reactivity: Human, Mouse

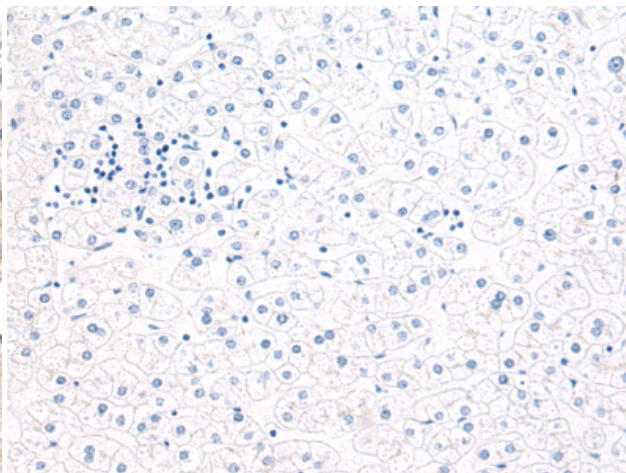
Constituents: PBS (without Mg²⁺ and Ca²⁺), pH 7.4, 150 mM NaCl, 0.05% Sodium Azide and 40% glycerol

Research Areas: Cell Biology

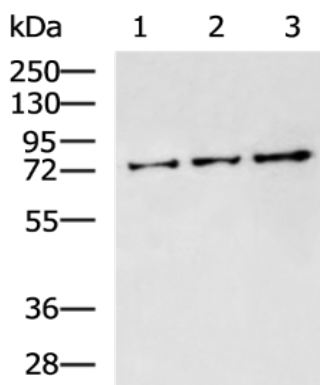
Storage & Shipping: Store at -20°C. Avoid repeated freezing and thawing



Immunohistochemistry analysis of paraffin embedded Human liver cancer tissue using 216804(SPDL1 Antibody) at a dilution of 1/110(Cytoplasm).



In comparison with the IHC on the left, the same paraffin-embedded Human liver cancer tissue is first treated with the fusion protein and then with 216804(Anti-SPDL1 Antibody) at dilution 1/110.



Gel: 8%SDS-PAGE, Lysate: 40 µg;
 Lane 1-3: K562 cell, Mouse testis tissue, 293T cell lysates;
 Primary antibody: 216804(SPDL1 Antibody) at dilution 1/800;
 Secondary antibody: HRP-conjugated Goat anti rabbit IgG at 1/5000 dilution;
 Exposure time: 5 minutes