

SPI1 RABBIT MAB

Cat.#: N262784

Product Name: Anti-SPI1 Rabbit Monoclonal Antibody

Synonyms: SPI1; Transcription factor PU.1; 31 kDa-transforming protein

UNIPROT ID: P17947

Background: Binds to the PU-box, a purine-rich DNA sequence (5'-GAGGAA-3') that can act as a lymphoid-specific enhancer. This protein is a transcriptional activator that may be specifically involved in the differentiation or activation of macrophages or B-cells. Also binds RNA and may modulate pre-mRNA splicing.

Immunogen: A synthetic peptide of human PU.1/Spi1

Applications: WB,IHC-P

Recommended Dilutions: WB: 1/500-1/1000 IHC: 1/50-1/100

Host Species: Rabbit

Clonality: Rabbit Monoclonal

Clone ID: R07-4D3

MW: Calculated MW: 31 kDa; Observed MW: 42 kDa

Isotype: IgG

Purification: Affinity Purified

Species Reactivity: Human,Mouse

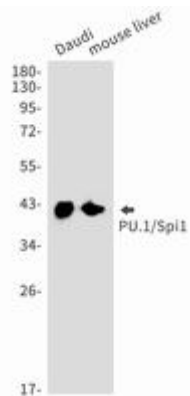
Conjugation: Unconjugated

Modification: Unmodified

Constituents: PBS (without Mg²⁺ and Ca²⁺), pH 7.3 containing 50% glycerol, 0.5% BSA and 0.02% sodium azide

Research Areas: Immunology

Storage & Shipping: Store at -20°C. Avoid repeated freezing and thawing



Western blot analysis of PU.1/Spi1 in Daudi, mouse liver lysates using SPI1 antibody.