

## SPIN4 RABBIT PAB

**Cat.#:** S216802

**Product Name:** Anti-SPIN4 Rabbit Polyclonal Antibody

**Synonyms:** TDRD28

**UNIPROT ID:** Q56A73 (Gene Accession - BC112360 )

**Background:** Enables methylated histone binding activity. Predicted to be involved in regulation of transcription, DNA-templated. Predicted to be active in cytosol and nucleoplasm.

**Immunogen:** Fusion protein of human SPIN4

**Applications:** ELISA, WB, IHC

**Recommended Dilutions:** IHC: 50-100;WB: 1000-5000;ELISA: 5000-10000

**Host Species:** Rabbit

**Clonality:** Rabbit Polyclonal

**Isotype:** Immunogen-specific rabbit IgG

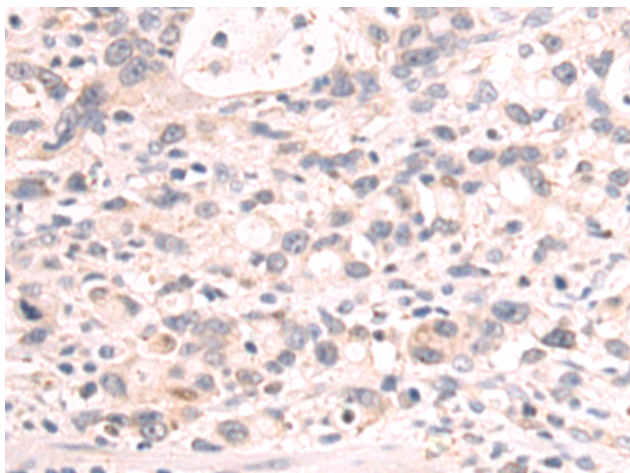
**Purification:** Antigen affinity purification

**Species Reactivity:** Human, Mouse

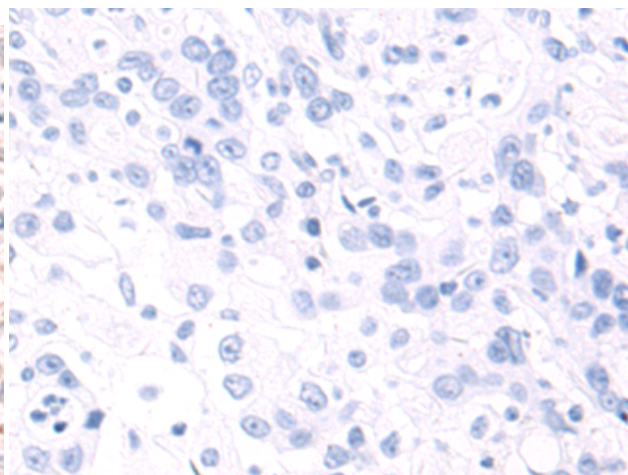
**Constituents:** PBS (without Mg<sup>2+</sup> and Ca<sup>2+</sup>), pH 7.4, 150 mM NaCl, 0.05% Sodium Azide and 40% glycerol

**Research Areas:** Cell Biology

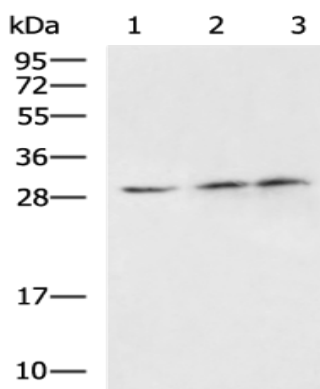
**Storage & Shipping:** Store at -20°C. Avoid repeated freezing and thawing



Immunohistochemistry analysis of paraffin embedded Human gastric cancer tissue using 216802(SPIN4 Antibody) at a dilution of 1/60(Cytoplasm).



In comparison with the IHC on the left, the same paraffin-embedded Human gastric cancer tissue is first treated with the fusion protein and then with 216802(Anti-SPIN4 Antibody) at dilution 1/60.



Gel: 12%SDS-PAGE, Lysate: 40 µg;  
 Lane 1-3: Human placenta tissue, Mouse large intestine tissue, Mouse fetal brain tissue lysates;  
 Primary antibody: 216802(SPIN4 Antibody) at dilution 1/1000;  
 Secondary antibody: HRP-conjugated Goat anti rabbit IgG at 1/5000 dilution;  
 Exposure time: 3 minutes