

SPINK1 RABBIT PAB

Cat.#: S222322

Product Name: Anti-Spink1 Rabbit Polyclonal Antibody

Synonyms: Tilp; Psti-1; Spink1

UNIPROT ID: P09655 (Gene Accession - NP_036806)

Background: acts as a trypsin inhibitor to protect the pancreas from premature activation of pancreatic juice; has additional monitor peptide activity to induce cholecystokinin release in the intestine.

Immunogen: Synthetic peptide of Rat Spink1

Applications: ELISA, WB, IHC

Recommended Dilutions: IHC: 25-50;WB: 500-2000;ELISA: 5000-10000

Host Species: Rabbit

Clonality: Rabbit Polyclonal

Isotype: Immunogen-specific rabbit IgG

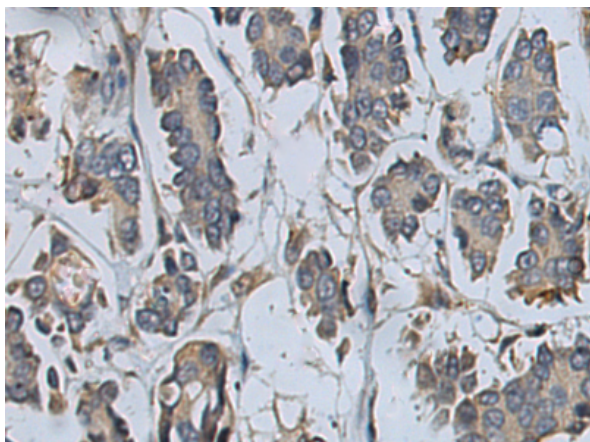
Purification: Antigen affinity purification

Species Reactivity: Human, Rat

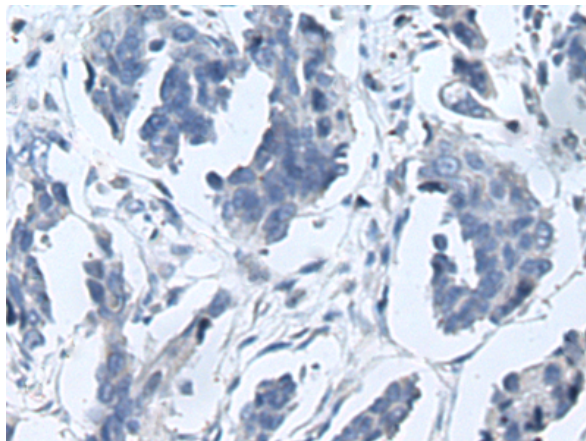
Constituents: PBS (without Mg²⁺ and Ca²⁺), pH 7.4, 150 mM NaCl, 0.05% Sodium Azide and 40% glycerol

Research Areas: Cell Biology

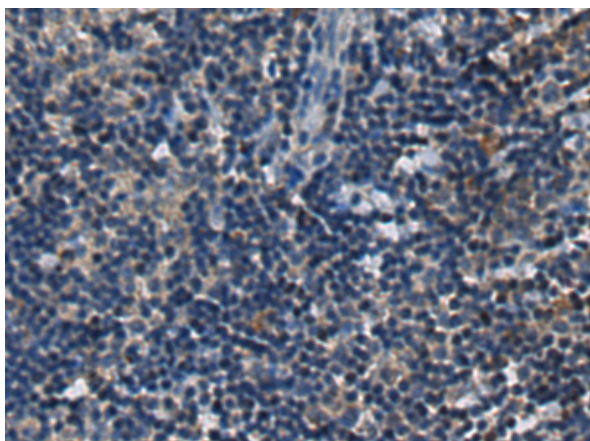
Storage & Shipping: Store at -20°C. Avoid repeated freezing and thawing



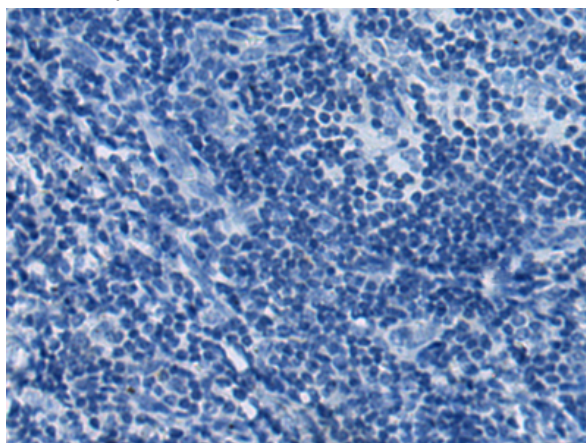
Immunohistochemistry analysis of paraffin embedded Human colorectal cancer tissue using 222322(Spink1 Antibody) at a dilution of 1/20(Secreted).



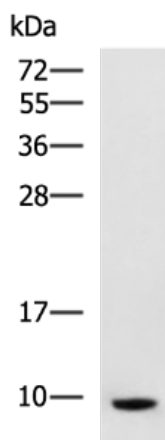
In comparison with the IHC on the left, the same paraffin-embedded Human colorectal cancer tissue is first treated with the synthetic peptide and then with 222322(Anti-Spink1 Antibody) at dilution 1/20.



The image on the left is immunohistochemistry of paraffin-embedded Human tonsil tissue using 222322(Anti-Spink1 Antibody) at a dilution of 1/20.



In comparison with the IHC on the left, the same paraffin-embedded Human tonsil tissue is first treated with synthetic peptide and then with D264388(Anti-Spink1 Antibody) at dilution 1/20.



Gel: 12%SDS-PAGE, Lysate: 40 µg;
Lane: Rat pancreas tissue lysate;
Primary antibody: 222322(Spink1 Antibody) at dilution 1/400;
Secondary antibody: HRP-conjugated Goat anti rabbit IgG at 1/5000 dilution;
Exposure time: 4 minutes



Product Description

Pioneering GTPase and Oncogene Product Development since 2010
