

## SPOCK3 RABBIT PAB

**Cat.#:** S218694

**Product Name:** Anti-SPOCK3 Rabbit Polyclonal Antibody

**Synonyms:** TES-3; TICN3; HSAJ1454

**UNIPROT ID:** Q9BQ16 (Gene Accession - BC000460 )

**Background:** This gene encodes a member of a novel family of calcium-binding proteoglycan proteins that contain thyroglobulin type-1 and Kazal-like domains. The encoded protein and may play a role in adult T-cell leukemia by inhibiting the activity of membrane-type matrix metalloproteinases. Alternatively spliced transcript variants encoding multiple isoforms have been observed for this gene.

**Immunogen:** Fusion protein of human SPOCK3

**Applications:** ELISA, WB, IHC

**Recommended Dilutions:** IHC: 25-100;WB: 200-1000;ELISA: 5000-10000

**Host Species:** Rabbit

**Clonality:** Rabbit Polyclonal

**Isotype:** Immunogen-specific rabbit IgG

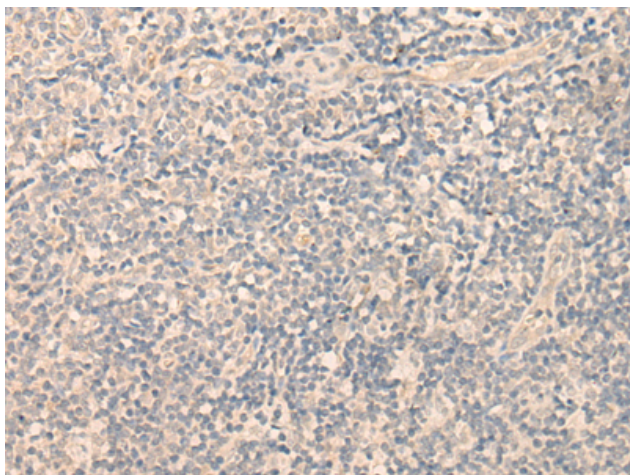
**Purification:** Antigen affinity purification

**Species Reactivity:** Human, Mouse

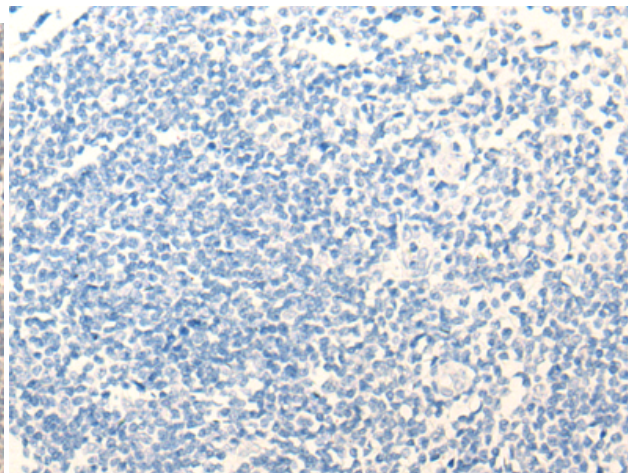
**Constituents:** PBS (without Mg<sup>2+</sup> and Ca<sup>2+</sup>), pH 7.4, 150 mM NaCl, 0.05% Sodium Azide and 40% glycerol

**Research Areas:** Signal Transduction

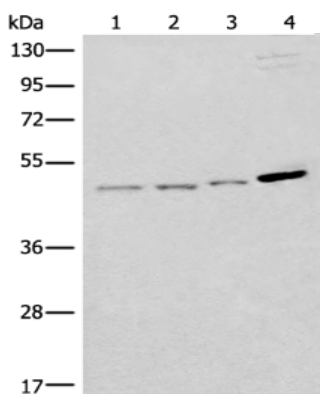
**Storage & Shipping:** Store at -20°C. Avoid repeated freezing and thawing



Immunohistochemistry analysis of paraffin embedded Human tonsil tissue using 218694(SPOCK3 Antibody) at a dilution of 1/20(Secreted).



In comparison with the IHC on the left, the same paraffin-embedded Human tonsil tissue is first treated with the fusion protein and then with 218694(Anti-SPOCK3 Antibody) at dilution 1/20.



Gel: 8%SDS-PAGE, Lysate: 40  $\mu$ g;  
Lane 1-4: Human left kidney tissue, Human cerebrum tissue, Mouse brain tissue, HL-60 cell lysates;  
Primary antibody: 218694(SPOCK3 Antibody) at dilution 1/300;  
Secondary antibody: Goat anti rabbit IgG at 1/8000 dilution;  
Exposure time: 30 seconds