

SPRN RABBIT PAB

Cat.#: S219984

Product Name: Anti-SPRN Rabbit Polyclonal Antibody

Synonyms: SHO; SHADOO; bA108K14.1

UNIPROT ID: Q5BIV9 (Gene Accession - NP_001012526)

Background: Prion-like protein that has PrP(C)-like neuroprotective activity. May act as a modulator for the biological actions of normal and abnormal PrP (By similarity).

Immunogen: Synthetic peptide of human SPRN

Applications: ELISA, IHC

Recommended Dilutions: IHC: 25-100; ELISA: 1000-2000

Host Species: Rabbit

Clonality: Rabbit Polyclonal

Isotype: Immunogen-specific rabbit IgG

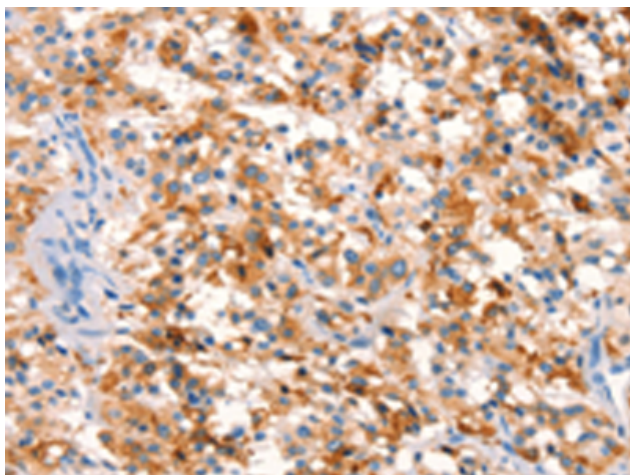
Purification: Antigen affinity purification

Species Reactivity: Human

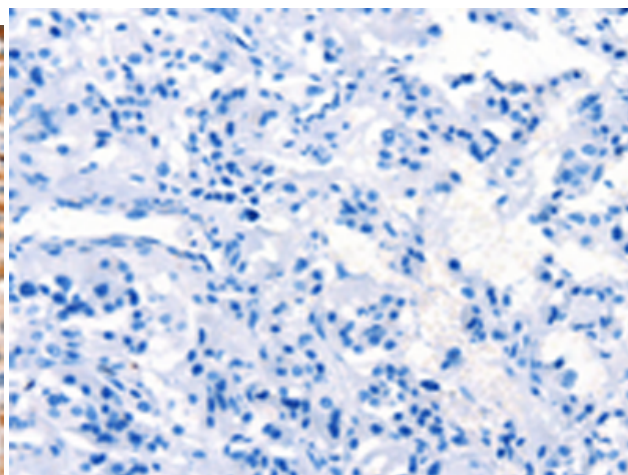
Constituents: PBS (without Mg²⁺ and Ca²⁺), pH 7.4, 150 mM NaCl, 0.05% Sodium Azide and 40% glycerol

Research Areas: Neuroscience

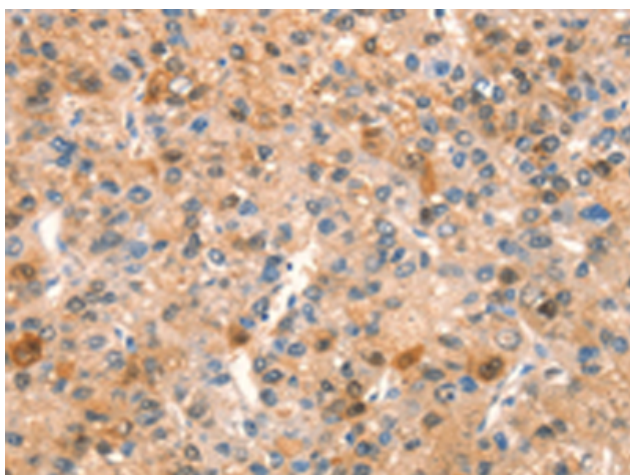
Storage & Shipping: Store at -20°C. Avoid repeated freezing and thawing



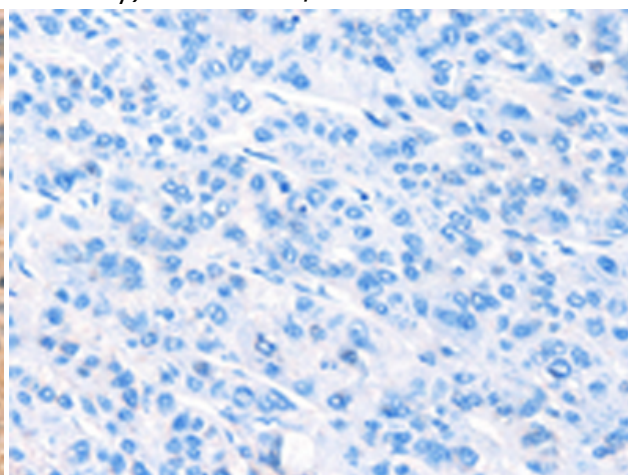
Immunohistochemistry analysis of paraffin embedded Human thyroid cancer tissue using 219984 (SPRN Antibody) at a dilution of 1/15 (Cytoplasm).



In comparison with the IHC on the left, the same paraffin-embedded Human thyroid cancer tissue is first treated with the synthetic peptide and then with 219984 (Anti-SPRN Antibody) at dilution 1/15.



The image on the left is immunohistochemistry of paraffin-embedded Human liver cancer tissue using 219984 (Anti-SPRN Antibody) at a dilution of 1/15.



In comparison with the IHC on the left, the same paraffin-embedded Human liver cancer tissue is first treated with synthetic peptide and then with D260731 (Anti-SPRN Antibody) at dilution 1/15.