

SPROUTY 4 RABBIT MAB

Cat.#: N262932

Product Name: Anti-Sprouty 4 Rabbit Monoclonal Antibody

Synonyms: Sprouty homolog 4; SPRY 4; Spry-4

UNIPROT ID: Q9C004

Background: Suppresses the insulin receptor and EGFR-transduced MAPK signaling pathway, but does not inhibit MAPK activation by a constitutively active mutant Ras. Probably impairs the formation of GTP-Ras.

Immunogen: A synthetic peptide of human Sprouty 4

Applications: WB,IHC-F,IHC-P,ICC/IF,IP

Recommended Dilutions: WB: 1/500-1/1000 IHC: 1/50-1/100 IF: 1/50-1/200 IP: 1/20

Host Species: Rabbit

Clonality: Rabbit Monoclonal

Clone ID: R01-6K5

MW: Calculated MW: 33 kDa; Observed MW: 33 kDa

Isotype: IgG

Purification: Affinity Purified

Species Reactivity: Human,Mouse,Rat

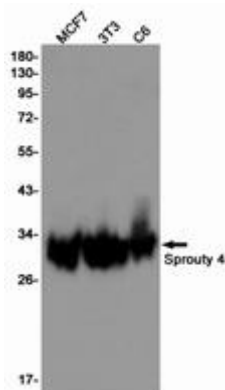
Conjugation: Unconjugated

Modification: Unmodified

Constituents: PBS (without Mg²⁺ and Ca²⁺), pH 7.3 containing 50% glycerol, 0.5% BSA and 0.02% sodium azide

Research Areas: Signal Transduction

Storage & Shipping: Store at -20°C. Avoid repeated freezing and thawing



Western blot analysis of Sprouty 4 in MCF-7, 3T3, C6 lysates using Sprouty 4 antibody.



Product Description

Pioneering GTPase and Oncogene Product Development since 2010
