

SPRY2 RABBIT PAB

Cat.#: S217848

Product Name: Anti-SPRY2 Rabbit Polyclonal Antibody

Synonyms: IGAN3; hSPRY2

UNIPROT ID: O43597 (Gene Accession - BC015745)

Background: This gene encodes a protein belonging to the sprouty family. The encoded protein contains a carboxyl-terminal cysteine-rich domain essential for the inhibitory activity on receptor tyrosine kinase signaling proteins and is required for growth factor stimulated translocation of the protein to membrane ruffles. In primary dermal endothelial cells this gene is transiently upregulated in response to fibroblast growth factor two. This protein is indirectly involved in the non-cell autonomous inhibitory effect on fibroblast growth factor two signaling. The protein interacts with Cas-Br-M (murine) ectopic retroviral transforming sequence, and can function as a bimodal regulator of epidermal growth factor receptor/mitogen-activated protein kinase signaling. This protein may play a role in alveoli branching during lung development as shown by a similar mouse protein.

Immunogen: Fusion protein of human SPRY2

Applications: ELISA, WB, IHC

Recommended Dilutions: IHC: 200-400;WB: 500-2000;ELISA: 5000-10000

Host Species: Rabbit

Clonality: Rabbit Polyclonal

Isotype: Immunogen-specific rabbit IgG

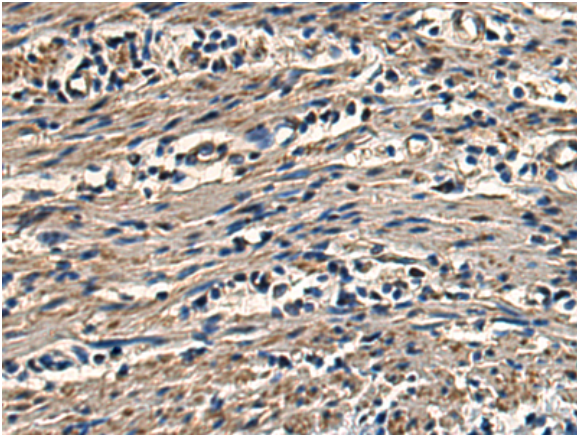
Purification: Antigen affinity purification

Species Reactivity: Human, Mouse

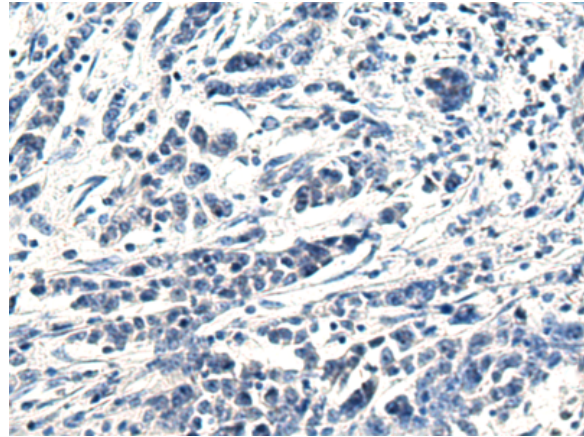
Constituents: PBS (without Mg²⁺ and Ca²⁺), pH 7.4, 150 mM NaCl, 0.05% Sodium Azide and 40% glycerol

Research Areas: Neuroscience, Cardiovascular, Signal Transduction, Stem Cells

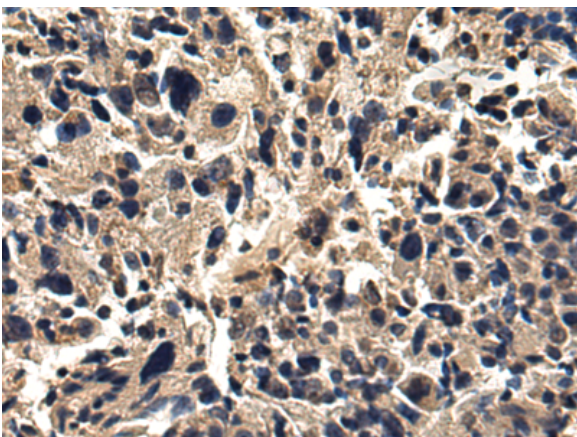
Storage & Shipping: Store at -20°C. Avoid repeated freezing and thawing



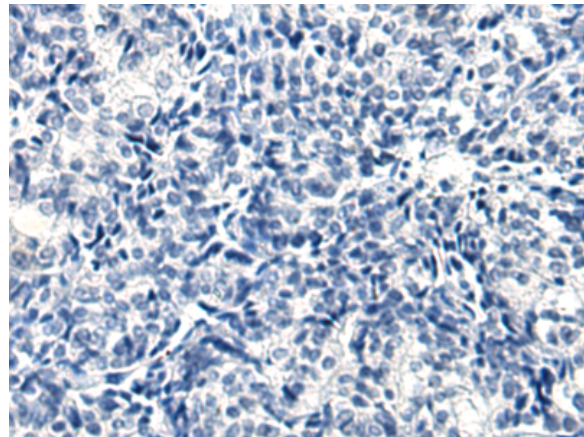
Immunohistochemistry analysis of paraffin embedded Human colorectal cancer tissue using 217848(SPRY2 Antibody) at a dilution of 1/200(Cytoplasm).



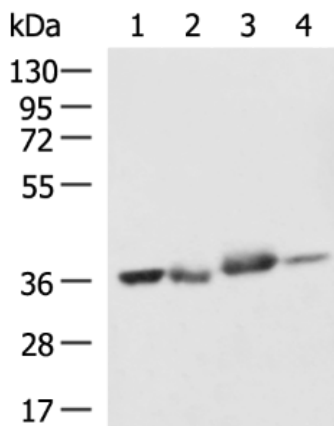
In comparison with the IHC on the left, the same paraffin-embedded Human colorectal cancer tissue is first treated with the fusion protein and then with 217848(Anti-SPRY2 Antibody) at dilution 1/200.



The image on the left is immunohistochemistry of paraffin-embedded Human prostate cancer tissue using 217848(Anti-SPRY2 Antibody) at a dilution of 1/200.



In comparison with the IHC on the left, the same paraffin-embedded Human prostate cancer tissue is first treated with fusion protein and then with D223217(Anti-SPRY2 Antibody) at dilution 1/200.



Gel: 8%SDS-PAGE, Lysate: 40 µg;
 Lane 1-4: A172, LOVO, A375, HepG2 cell lysates;
 Primary antibody: 217848(SPRY2 Antibody) at dilution 1/800;
 Secondary antibody: HRP-conjugated Goat anti rabbit IgG at 1/5000 dilution;
 Exposure time: 40 seconds



Product Description

Pioneering GTPase and Oncogene Product Development since 2010
