

SPT5 RABBIT MAB

Cat.#: N263558

Product Name: Anti-SPT5 Rabbit Monoclonal Antibody

Synonyms: hSPT5; SPT5; SPT5H; supt5h; Tat CT1

UNIPROT ID: O00267

Background: Component of the DRB sensitivity-inducing factor complex (DSIF complex), which regulates mRNA processing and transcription elongation by RNA polymerase II.

Immunogen: A synthetic peptide of human SPT5

Applications: WB,IHC-F,IHC-P,ICC/IF

Recommended Dilutions: WB: 1/500-1/1000 IHC: 1/50-1/100 IF: 1/50-1/200

Host Species: Rabbit

Clonality: Rabbit Monoclonal

Clone ID: R01-5C2

MW: Calculated MW: 121 kDa; Observed MW: 150 kDa

Isotype: IgG

Purification: Affinity Purified

Species Reactivity: Human

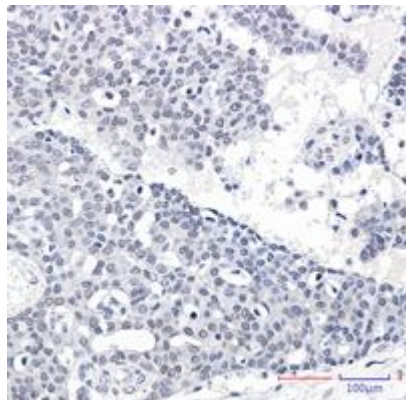
Conjugation: Unconjugated

Modification: Unmodified

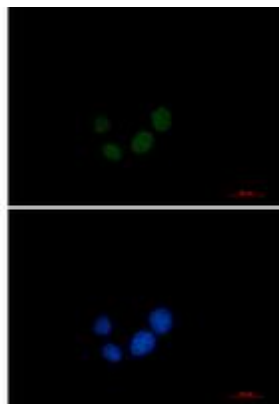
Constituents: PBS (without Mg²⁺ and Ca²⁺), pH 7.3 containing 50% glycerol, 0.5% BSA and 0.02% sodium azide

Research Areas: Epigenetics and Nuclear Signaling

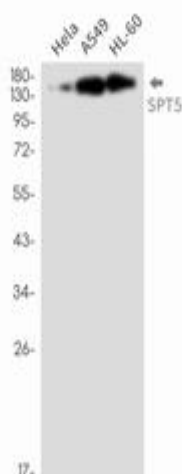
Storage & Shipping: Store at -20°C. Avoid repeated freezing and thawing



Immunohistochemistry analysis of paraffin-embedded Human breast cancer tissue using SPT5 antibody. High-pressure and temperature Sodium Citrate pH 6.0 was used for antigen retrieval.



Immunocytochemistry analysis of SPT5 (green) in HeLa using SPT5 antibody, and DAPI (blue).



Western blot analysis of SPT5 in HeLa, A549, HL-60 lysates using SPT5 antibody.