

SQSTM1/P62 RABBIT PAB

Cat.#: N225551

Product Name: Anti-SQSTM1/p62 Rabbit pAb

Synonyms: p60; p62; A170; DMRV; OSIL; PDB3; ZIP3; p62B; NADGP; FTDALS3

UNIPROT ID: Q13501

Background: Autophagy receptor that interacts directly with both the cargo to become degraded and an autophagy modifier of the MAP1 LC3 family. Required both for the formation and autophagic degradation of polyubiquitin-containing bodies, called ALIS (aggresome-like induced structures) and links ALIS to the autophagic machinery. Involved in midbody ring degradation. May regulate the activation of NFKB1 by TNF-alpha, nerve growth factor (NGF) and interleukin-1.

Immunogen: A synthesized peptide derived from human p62/SQSTM1

Applications: WB, ICC/IF, FC

Recommended Dilutions: WB: 1/500-1/1000 IF: 1/50-1/200 FC: 1/50-1/100

Host Species: Rabbit

Clonality: Rabbit Polyclonal

Clone ID: -

MW: Calculated MW: 48 kDa; Observed MW: 62 kDa

Isotype: IgG

Purification: Affinity Chromatography

Species Reactivity: Human, Mouse, Rat

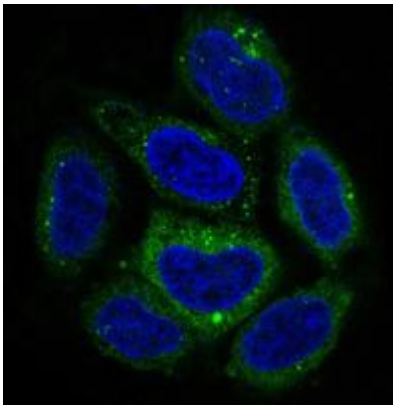
Conjugation: Unconjugated

Modification: Unmodified

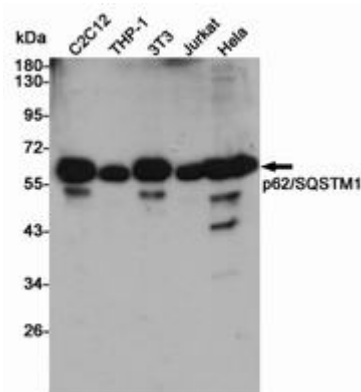
Constituents: PBS (without Mg²⁺ and Ca²⁺), pH 7.3 containing 50% glycerol, 0.5% BSA and 0.02% sodium azide

Research Areas: Signal Transduction

Storage & Shipping: Store at -20°C. Avoid repeated freezing and thawing



Immunofluorescence analysis of SQSTM1/p62 in HeLa using p62/SQSTM1 antibody.



Western blot analysis of p62/SQSTM1 in C2C12, THP-1, 3T3, Jurkat and HeLa lysates using SQSTM1/p62 antibody.