

SRP68 RABBIT PAB

Cat.#: S220913

Product Name: Anti-SRP68 Rabbit Polyclonal Antibody

Synonyms:

UNIPROT ID: Q9UHB9 (Gene Accession - NP_055045)

Background: This gene encodes a subunit of the signal recognition particle (SRP). The SRP is a ribonucleoprotein complex that transports secreted and membrane proteins to the endoplasmic reticulum for processing. The complex includes a 7S RNA and six protein subunits. The encoded protein is the 68kDa component of the SRP, and forms a heterodimer with the 72kDa subunit that is required for SRP function.

Immunogen: Synthetic peptide of human SRP68

Applications: ELISA, IHC

Recommended Dilutions: IHC: 25-100; ELISA: 1000-2000

Host Species: Rabbit

Clonality: Rabbit Polyclonal

Isotype: Immunogen-specific rabbit IgG

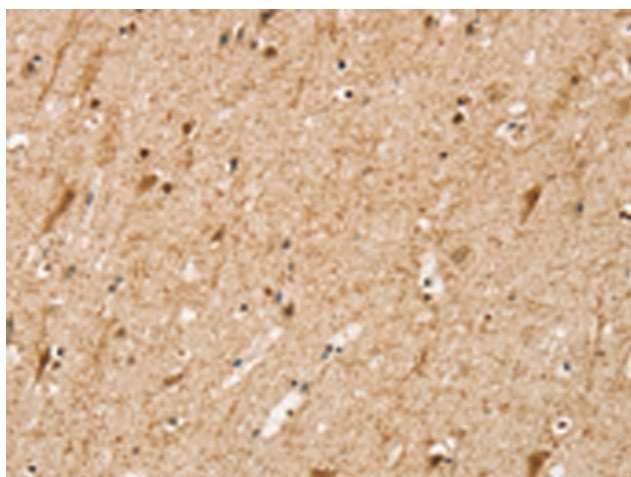
Purification: Antigen affinity purification

Species Reactivity: Human, Mouse

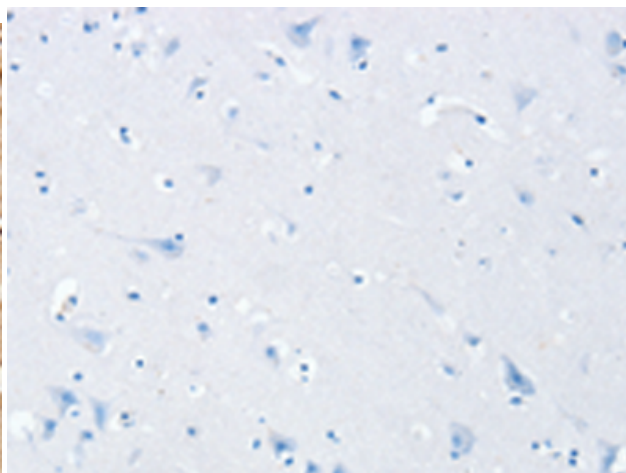
Constituents: PBS (without Mg²⁺ and Ca²⁺), pH 7.4, 150 mM NaCl, 0.05% Sodium Azide and 40% glycerol

Research Areas: Epigenetics and Nuclear Signaling

Storage & Shipping: Store at -20°C. Avoid repeated freezing and thawing



Immunohistochemistry analysis of paraffin embedded Human brain tissue using 220913(SRP68 Antibody) at a dilution of 1/25(Cytoplasm).



In comparison with the IHC on the left, the same paraffin-embedded Human brain tissue is first treated with the synthetic peptide and then with 220913(Anti-SRP68 Antibody) at dilution 1/25.