

## SRPX RABBIT PAB

**Cat.#:** S217820

**Product Name:** Anti-SRPX Rabbit Polyclonal Antibody

**Synonyms:** DRS; ETX1; SRPX1; HEL-S-83p

**UNIPROT ID:** P78539 (Gene Accession - BC020684 )

**Background:** SRPX gene also designated ETX1, resides within this region and is deleted in XLRP patients. There are at least two splice variants of SRP,x one of which contains a thirty amino acid signal peptide. Both variants contain three complement control protein domains, a hydrophobic region for membrane anchorage, and a cytoplasmic carboxy terminus. SRPX is expressed in retina and heart. SRPX is highly homologous to the drs (downregulated by v-src) human homolog, which suggests a role for SRPX as a tumor suppressor.

**Immunogen:** Fusion protein of human SRPX

**Applications:** ELISA, WB, IHC

**Recommended Dilutions:** IHC: 25-100;WB: 1000-5000;ELISA: 2000-10000

**Host Species:** Rabbit

**Clonality:** Rabbit Polyclonal

**Isotype:** Immunogen-specific rabbit IgG

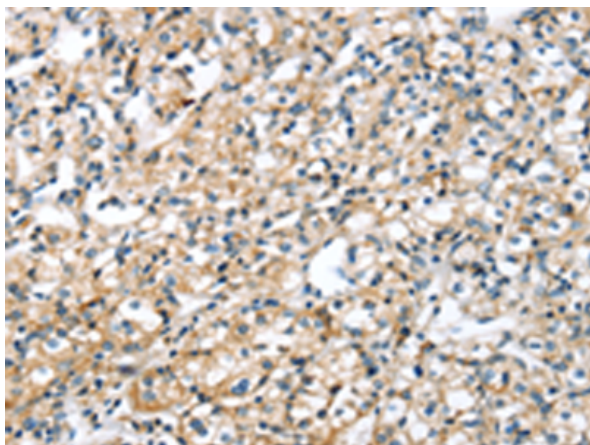
**Purification:** Antigen affinity purification

**Species Reactivity:** Human

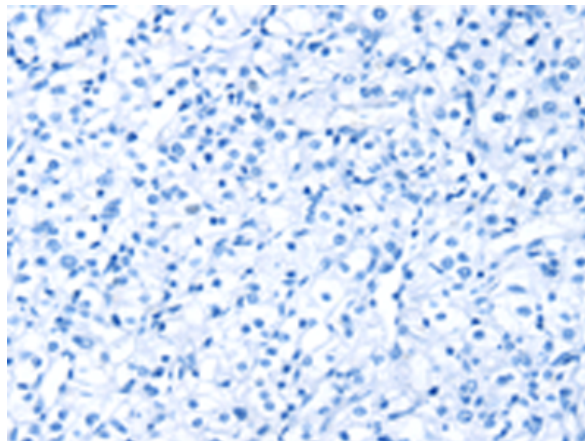
**Constituents:** PBS (without Mg<sup>2+</sup> and Ca<sup>2+</sup>), pH 7.4, 150 mM NaCl, 0.05% Sodium Azide and 40% glycerol

**Research Areas:** Cell Biology

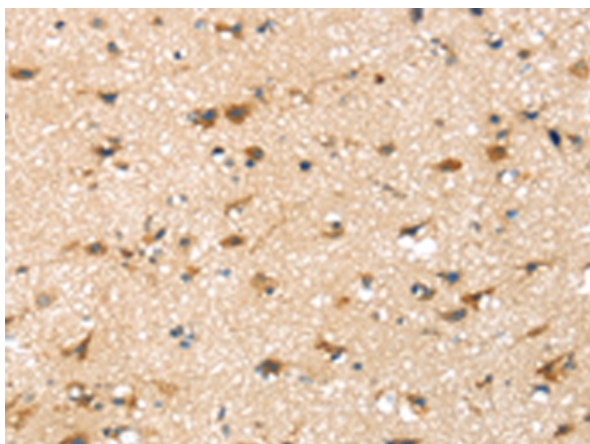
**Storage & Shipping:** Store at -20°C. Avoid repeated freezing and thawing



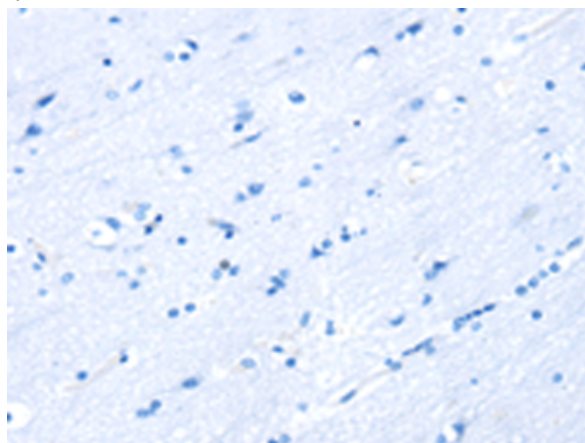
Immunohistochemistry analysis of paraffin embedded Human prostate cancer tissue using 217820(SRPX Antibody) at a dilution of 1/30(Cytoplasm).



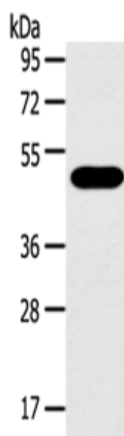
In comparison with the IHC on the left, the same paraffin-embedded Human prostate cancer tissue is first treated with the fusion protein and then with 217820(Anti-SRPX Antibody) at dilution 1/30.



The image on the left is immunohistochemistry of paraffin-embedded Human brain tissue using 217820(Anti-SRPX Antibody) at a dilution of 1/30.



In comparison with the IHC on the left, the same paraffin-embedded Human brain tissue is first treated with fusion protein and then with D223155(Anti-SRPX Antibody) at dilution 1/30.



Gel: 8%SDS-PAGE, Lysate: 40 µg;  
 Lane: 293T cells;  
 Primary antibody: 217820(SRPX Antibody) at dilution 1/500;  
 Secondary antibody: Goat anti rabbit IgG at 1/8000 dilution;  
 Exposure time: 15 seconds



# Product Description

Pioneering GTPase and Oncogene Product Development since 2010

---