

SRRM2 RABBIT PAB

Cat.#: S222428

Product Name: Anti-SRRM2 Rabbit Polyclonal Antibody

Synonyms: CWF21; Cwc21; 300-KD; SRL300; SRm300; HSPC075

UNIPROT ID: Q9UQ35 (Gene Accession - NP_057417)

Background: Enables C2H2 zinc finger domain binding activity and protein N-terminus binding activity. Involved in mRNA splicing, via spliceosome. Located in Cajal body and nuclear speck. Part of U2-type catalytic step 2 spliceosome and U2-type pre-catalytic spliceosome. Biomarker of Parkinson's disease.

Immunogen: Synthetic peptide of human SRRM2

Applications: ELISA, IHC

Recommended Dilutions: IHC: 50-200; ELISA: 5000-10000

Host Species: Rabbit

Clonality: Rabbit Polyclonal

Isotype: Immunogen-specific rabbit IgG

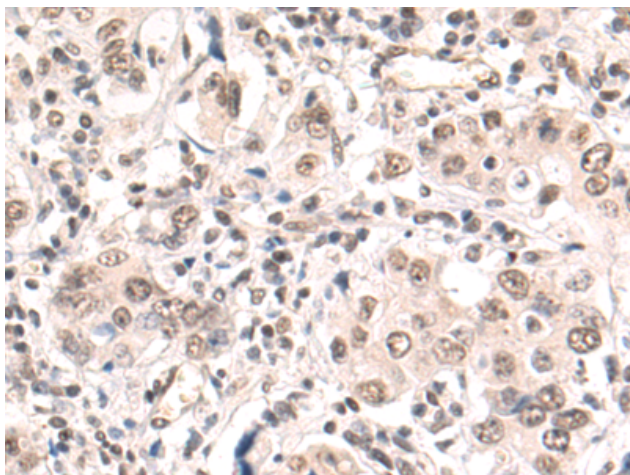
Purification: Antigen affinity purification

Species Reactivity: Human, Mouse

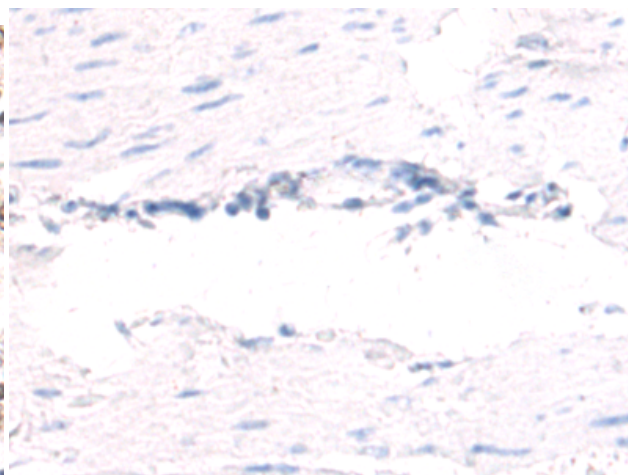
Constituents: PBS (without Mg²⁺ and Ca²⁺), pH 7.4, 150 mM NaCl, 0.05% Sodium Azide and 40% glycerol

Research Areas: Epigenetics and Nuclear Signaling

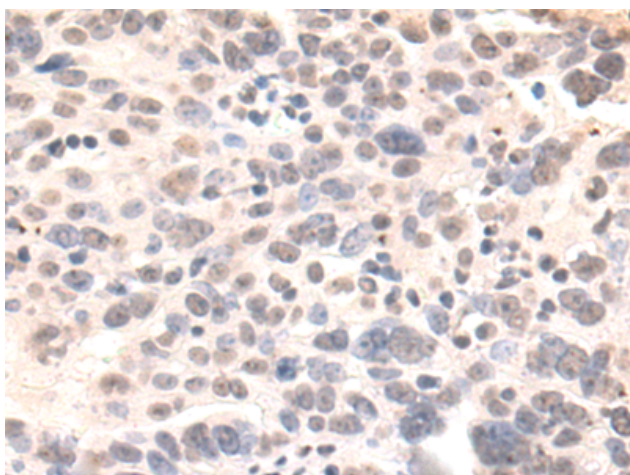
Storage & Shipping: Store at -20°C. Avoid repeated freezing and thawing



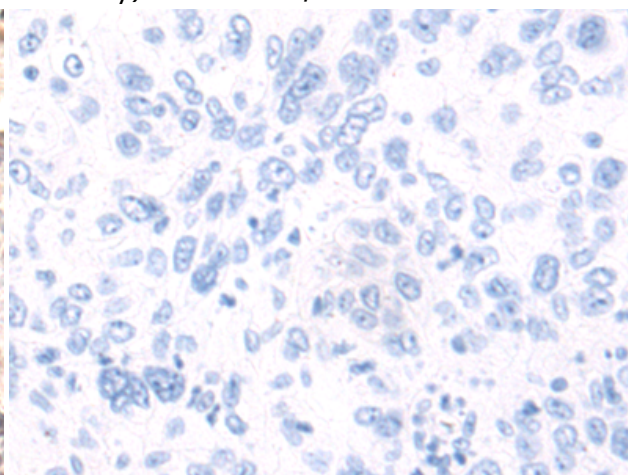
Immunohistochemistry analysis of paraffin embedded Human gastric cancer tissue using 222428 (SRRM2 Antibody) at a dilution of 1/50 (Nucleus).



In comparison with the IHC on the left, the same paraffin-embedded Human gastric cancer tissue is first treated with the synthetic peptide and then with 222428 (Anti-SRRM2 Antibody) at dilution 1/50.



The image on the left is immunohistochemistry of paraffin-embedded Human breast cancer tissue using 222428 (Anti-SRRM2 Antibody) at a dilution of 1/50.



In comparison with the IHC on the left, the same paraffin-embedded Human breast cancer tissue is first treated with synthetic peptide and then with D264595 (Anti-SRRM2 Antibody) at dilution 1/50.