

SRSF3 RABBIT MAB

Cat.#: N262891

Product Name: Anti-SRSF3 Rabbit Monoclonal Antibody

Synonyms: SRSF3; SFRS3; SRP20; Serine/arginine-rich splicing factor 3; Pre-mRNA-splicing factor SRP20; Splicing factor; arginine/serine-rich 3

UNIPROT ID: P84103

Background: May be involved in RNA processing in relation with cellular proliferation and/or maturation.

Immunogen: A synthetic peptide of human SFRS3

Applications: WB,IHC-P

Recommended Dilutions: WB: 1/500-1/1000 IHC: 1/50-1/100

Host Species: Rabbit

Clonality: Rabbit Monoclonal

Clone ID: R01-6G2

MW: Calculated MW: 19 kDa; Observed MW: 19 kDa

Isotype: IgG

Purification: Affinity Purified

Species Reactivity: Human,Mouse,Rat

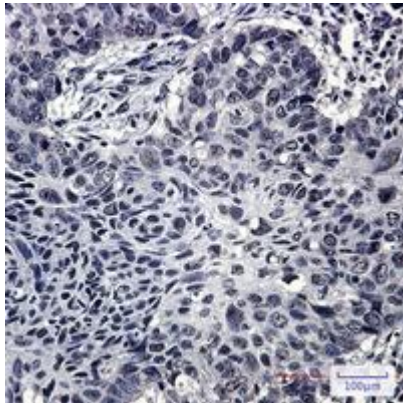
Conjugation: Unconjugated

Modification: Unmodified

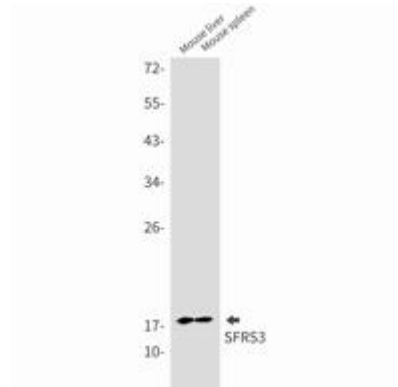
Constituents: PBS (without Mg²⁺ and Ca²⁺), pH 7.3 containing 50% glycerol, 0.5% BSA and 0.02% sodium azide

Research Areas: Epigenetics and Nuclear Signaling

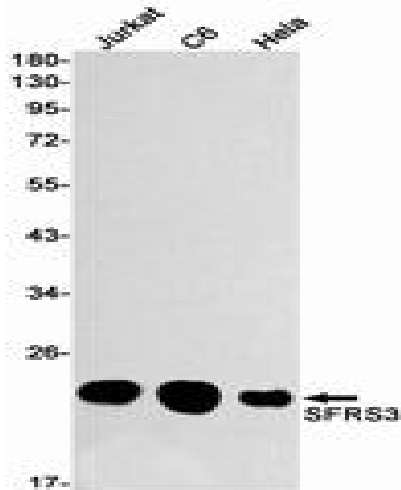
Storage & Shipping: Store at -20°C. Avoid repeated freezing and thawing



Immunohistochemistry analysis of paraffin-embedded Human lung cancer using SFRS3 antibody. High-pressure and temperature Sodium Citrate pH 6.0 was used for antigen retrieval.



Western blot analysis of SFRS3 in mouse liver, mouse spleen lysates using SRSF3 antibody.



Western blot analysis of SFRS3 in Jurkat, C6, HeLa lysates using SFRS3 antibody.